

Opening Date: May 1, 2024

Closing Date: May 30, 2024

Online entries due.

Mailed entries postmarked

## **KDA Western Dressage Lite Show June 15-16, 2024**

**AQHA Sanctioned (see page 9 for details)**

**Kentucky Horse Park, Lexington, KY  
Dressage Complex**

*Preliminary Prize List*

**WDAA Recognized Show #24-222**

**Judge**

Gail Matheus WD "R" Towanda, KS

**Steward**

Joyce Hamblin, Lexington, KY



**Mail entries to:**

KDA Western Dressage  
837 Glenlake Drive  
Edmond, OK 73013  
(405) 760-0135

[susan@showsecretary.com](mailto:susan@showsecretary.com)

**Secretary**

Suzanne Richards  
Frankfort, KY  
859-825-8663

[Suzrich65@gmail.com](mailto:Suzrich65@gmail.com)

**Manager**

Charli Ann Stevens  
Versailles, KY  
636-297-4575

[charli@kittablu.com](mailto:charli@kittablu.com)

**Licensee Contact**

Sheila Woerth  
Lexington, KY  
(859) 351-4137

[sheilatully3442@gmail.com](mailto:sheilatully3442@gmail.com)

To be eligible to participate as a rider, owner, lessee, coach, or trainer at Federation LITE competitions, persons need NOT be members of USEF or WDAA.

**EXCEPTIONS** Those wishing to be eligible for USEF HOTY awards must have USEF horse registration and be USEF members, and those seeking WDAA WHLPAP points must be WDAA members.

Click [HERE](#) to find out more about WDAA WHLPAP.

USEF Numbers must be provided to show secretary prior to the show for results to be reported for USEF HOTY.

**Protective headgear is required for ALL riders.**

Licensee: Kentucky Dressage Association USEF License #s 344799 Lite Competition  
WDAA License #s 24-222

Horse show updates posted on



Kentucky Dressage Association

## ADVERTISER, VENDOR, and SPONSOR INFORMATION



**There are numerous options for Advertisers, Sponsors, and Vendors.**

**Advertisers** ads in the show programs, KDA newsletter *Impulsion*, as well as website advertising.

**Vendors** Bronze, Silver, and Gold levels available.

**Business Membership** All sponsorship levels include website banner advertising, *Impulsion* and E-blast advertising, and announcements at the show. Higher levels may include ring naming, vendor spot, banners.

Click [HERE](#) for Advertising, Vendors, Business Membership Opportunities

**Class Sponsors** Choosing to become a class sponsor is a great way to show your support for KDA! To show our appreciation for your \$50 contribution, your name will be listed in the show program and announced at the beginning of your sponsored class. A printable form can be found on page 17 of this prize list.

Please note it will be first come first served on **class sponsorships** and we cannot guarantee your class will have entries, we will do our best to match your request. Sponsorships are tax deductible KDA is a 501(c)3 organization.

Details for all events will be on our website  
[www.kentuckydressageassociation.com](http://www.kentuckydressageassociation.com) and  
Facebook page Kentucky Dressage Association

## CLASS LIST

Saturday	Sunday	Class Name	Divisions	Fee
1IT1	2IT1	Western Dressage Intro Level - Test 1	O, AA, Jr, Gaited	\$45
1IT2	2IT2	Western Dressage Intro Level - Test 2	O, AA, Jr, Gaited	\$45
1IT3	2IT3	Western Dressage Intro Level - Test 3	O, AA, Jr, Gaited	\$45
1IT4	2IT4	Western Dressage Intro Level - Test 4	O, AA, Jr, Gaited	\$45
1B1	2B1	Western Dressage Basic Level - Test 1	O, AA, Jr, Gaited	\$45
1B2	2B2	Western Dressage Basic Level - Test 2	O, AA, Jr, Gaited	\$45
1B3	2B3	Western Dressage Basic Level - Test 3	O, AA, Jr, Gaited	\$45
1B4	2B4	Western Dressage Basic Level - Test 4	O, AA, Jr, Gaited	\$45
111	211	Western Dressage Level 1 - Test 1	O, AA, Jr, Gaited	\$45
112	212	Western Dressage Level 1 - Test 2	O, AA, Jr, Gaited	\$45
113	213	Western Dressage Level 1 - Test 3	O, AA, Jr, Gaited	\$45
114	214	Western Dressage Level 1 - Test 4	O, AA, Jr, Gaited	\$45
121	221	Western Dressage Level 2 - Test 1	O, AA, Jr, Gaited	\$45
122	222	Western Dressage Level 2 - Test 2	O, AA, Jr, Gaited	\$45
123	223	Western Dressage Level 2 - Test 3	O, AA, Jr, Gaited	\$45
124	224	Western Dressage Level 2 - Test 4	O, AA, Jr, Gaited	\$45
1TOCA	2TOCA	Western Dressage Intro Through Level 5 Test of Choice	O, AA, Jr, Gaited	\$45
1TOCB	2TOCB	Western Dressage Intro Through Level 5 Test of Choice	O, AA, Jr, Gaited	\$45
1TOCC	2TOCC	Western Dressage Level 3 Through Level 5 Test of Choice	O, AA, Jr, Gaited	\$45
144R	244R	Western Dressage Suitability under saddle walk/jog	Open or Gaited	\$45
145R	245R	Western Dressage Suitability under saddle walk/jog/lope	Open or Gaited	\$45
146R	246R	Western Dressage Seat Equitation walk/jog	Open or Gaited	\$45
147R	247R	Western Dressage Seat Equitation walk/jog/lope	Open or Gaited	\$45
148R	248R	Western Dressage Horsemanship walk/jog Test A	Open or Gaited	\$45
149R	249R	Western Dressage Horsemanship Intermediate Test A walk/jog/lope	Open or Gaited	\$45
139	239	Western Dressage Musical Freestyle TOC (indicate test) No costumes.	Open or Gaited	\$45

**Tests** both nongaited and gaited horses will use **2022 WDAA/USEF Western Dressage tests**, which are available at [www.westerndressageassociation.org](http://www.westerndressageassociation.org).

## FEE SCHEDULE

Office Fee per show	\$32	Stall/horse (Friday noon through Sunday 9 p.m.)	\$95
Incomplete/Incorrect Fee	\$10	Tack stall	\$95
Change/Add Fee per change after closing date	\$20	Early/Late Stall Fee Per Night	\$65
Late Entry Fee (postmarked after closing date or done online after closing date)	\$50	Trailer-in Fee/horse/weekend	\$70
Post Office Visit Fee if signature required	\$30	Noncompete Fee (space permitting) per show	\$50
Returned Check/Declined Credit Card Fee	\$50	The Kentucky Horse Park Equine Facility Fee/horse/weekend	*\$10

***\* The Kentucky Horse Park \$10 (per horse) Equine Facility Fee has been enacted to produce a sustainable stream of revenue to support show facility maintenance. These funds will go into a restricted account that can only be used for footing maintenance and/or replacement, barn repair, water truck/drag maintenance, etc. This fee will also pertain to noncompeting horses helping to keep Kentucky Horse Park a world-class facility for years to come. This KY Horse Park Equine Facility fee is once per weekend just like a stall fee.***

## ENTRY INFORMATION

### Two options to enter:

1.) **Online entry- credit cards are only method of payment.** A 4% online convenience fee will be added to your total fees. [www.showsecretary.com](http://www.showsecretary.com)

2.) **Mailed entry-** only checks or money orders in **US Funds only** are accepted. Please make a single check/money order payable to **Kentucky Dressage Association (KDA)**. For security, **NO CREDIT CARDS** accepted for mailed entries. Show entry must be postmarked by the closing date. **Mail to: KDA Western Dressage 837 Glenlake Dr, Edmond OK 73013 PLEASE SEND ENTRIES WITHOUT A SIGNATURE NEEDED.**

**ENTRIES SENT WITH SIGNATURE REQUIRED WILL INCUR A \$30 POST OFFICE VISIT FEE.**

**E-mailed entries will NOT be accepted.**

**Reminder: Each horse/rider combination requires a separate entry form.**

Entry is not complete until payment is received. Checks will be deposited upon receipt. No post-dated checks accepted. Dishonored checks or declined credit cards will require complete repayment prior to the show plus a service charge of \$50. All outstanding fees must be paid before show packets are issued. No bridle number will be issued without full payment and completed entry, including signatures and emergency contact information.

**Complete entries MUST include** A copy of a negative Coggins taken within 12 months of the show dates showing the same horse name as on the entry (GR906.4) All entries must include a signed copy of the **USEF Waiver and Release of Liability** (page 20).

**Entries with items missing at closing date are subject to an incomplete fee.**

Entries are accepted on a first-come, first-served basis based on postmark or online entry date and entries may be limited. Those entries postmarked after closing will be accepted at the discretion of the show secretary, based on a space available basis, and charged a \$50 late fee per show. If the classes are oversubscribed, a Waiting List (in the order of receipt) will be maintained. Management reserves the right to refuse any entry. Entries may close early if time limits for judges are filled. Remaining entries will be placed on a wait list. **Late entries**, if accepted, must be complete and submitted by 11 a.m. the day before start of class. Late Entries will not be included in the program. Entries are limited to one arena. Send your entries early to ensure getting into the shows.

**Noncompeting Horses** are welcome on a space-available basis. Owner must fill out an entry form with all release signatures, send a current Coggins, and pay noncompete fee per show, office fee per show, and a stall fee or trailer-in fee, but no USEF drug fees. Noncompete horses are still subject to and must comply with the Drugs and Medication rules and are subject to drug testing. Noncompeting horses must wear current issued bridle number when out of the stall. Noncompeting horses may only school in competition and warmup arenas after show hours.

**Conditions of entry** Every horse entered for competition will be under the control of the Horse Show Management, but the Horse Show Management will, in no case, be responsible for any loss or damage that may occur, and it shall be a condition of entry that each exhibitor shall hold the Horse Show Management, Facility and its Directors harmless for any loss or accident to his horse, horses or equipment which may occur from sickness, fire or otherwise.

**Confirmation of entry will be e-mailed.  
All e-mail addresses must be CLEARLY printed.**

## HORSE/RIDER MEMBERSHIPS and SAFE SPORT

**USEF Membership** This is a USEF LITE competition. NO USEF memberships, non-member fees, or horse registrations are required to compete in this show.

To be eligible to participate as a rider, owner, lessee, coach, or trainer at Federation LITE competitions, persons need NOT be members of USEF or WDAA.

**EXCEPTIONS** Those wishing to be eligible for USEF HOTY awards must have USEF horse registration and be USEF members, and those seeking WDAA WHLPAP points must be WDAA members.

Click [HERE](#) to find out more about WDAA WHLPAP.

USEF Numbers must be provided to show secretary prior to the show for results to be reported for USEF HOTY.

**Class Division Explanations** Riders are eligible to compete as **Jr** (Juniors) if they are 17 years of age or less at the beginning of the 2024 competition year (December 1, 2023 – November 30, 2024.) Individuals are eligible to compete as **\*AA** (Adult Amateur) from the beginning of the calendar year in which they reach the age of 22 and must hold current USEF Amateur card. **Open** - A division that is open to all. There are no restrictions based on the horse (age, sex, size, residence or membership of owner) or rider (age, experience, qualifications, sex, residence, etc.)

\*Amateur Status: If you are entering amateur division, you will need to provide proof of amateur status with your entry. If you do not provide proof of amateur status, you will be placed in the open division. Because this is a USEF recognized show, the only acceptable proof of amateur status is a USEF Amateur card or EC Amateur card. Please see <http://www.usef.org> for more information on obtaining an amateur card.

**USEF SAFESPORT TRAINING REQUIREMENTS TO COMPETE** Effective January 1, 2019, every USEF adult member (18 & older) with an active senior competing membership must complete USEF's Safe Sport Training, overseen by the U.S. Center for SafeSport. An adult member may be OWNER, RIDER, TRAINER and/or COACH. Adult members listed on the entry must complete the entire course and be Safe Sport Trained before the first day of competition. Safe Sport Training must be completed by all adult members on the entry or the rider will not be allowed to compete. You may access the Safe Sport modules from your USEF member dashboard at [www.USEF.org](http://www.USEF.org).



**Every class offered herein which is covered by the rules and specifications of the current rules and of the current USEF/WDAA rules will be judged in accordance therewith.**

## REFUNDS, SCRATCHES, and HAZARDOUS WEATHER POLICIES

**Refund Policy** Cancellations accepted only in writing by mail or e-mail. Cancellations prior to or on the closing date will be refunded less \$50 cancellation fee, office fee, and online convenience fee. **No refunds will be issued after closing date (even if closing date is extended)** Refundable fees will be mailed within one month after the end of the competition for entries that were cancelled. Refunds of less than \$15 will be considered donations to the Dressage Complex Renovation Fund unless owners opt out of the donation opportunity on the entry form or by notification to show secretary at the show.

Once you are at the show, please notify the show office if you are scratching a class.  
A no show is defined as a scratch for the entire show. **Please do not be a 'NO SHOW'.**

**Scratches During Show** Competitors have the responsibility to inform the Show Secretary in the Show Office of their intent to scratch a ride prior to the scheduled ride time. Scratches will be accepted at the competition arena or with the Ring Steward but the competitor or representative must contact the show office to officially scratch their ride. Scratched rides are not refundable.

**Hazardous Weather/Act of God/Accident Policy** Management reserves the right to cancel any classes due to hazardous weather, Acts of God, accident, or emergency. No refund for cancellations due to hazardous weather, Acts of God, accidents, or emergencies. GR305.4

## CLASS RESTRICTIONS

- Horses may be ridden by two riders. Each horse/rider combination requires a separate entry with all signatures and emergency contact. [WD 102](#)
- No horse may be ridden in the same class number more than once (even with a different rider) per [WD 102.2](#)
- Horses who have shown in Western Hack are no longer eligible for Western Suitability.
- Horse/rider combinations showing in walk/jog rail classes are not eligible for other rail classes or any test other than Introductory Level (Different horse/rider combinations are eligible for other rail classes and tests)
- Horses may not compete in more than 6 tests per day.
- Horses may only compete in levels that are adjacent with the same rider. For example, a horse may not be ridden in a basic level test and a level two test UNLESS with a different rider. [WD 102.](#)
- A horse may be ridden by a maximum of two riders. [WD 102.](#)
- The open division is for all nongaited horses regardless of breed.
- The gaited division is for all gaited horses regardless of breed and all riders regardless of age or status (professional, adult amateur, or youth.)
- Nongaited and gaited horses compete together in the rail classes. They will be shown separately only if there are a minimum of four nongaited and four gaited entries per class, otherwise, they will be shown and placed together for ribbons.

**Tests** both nongaited and gaited horses will use 2022 WDAA/USEF Western Dressage tests, which are available at [www.westerndressageassociation.org](http://www.westerndressageassociation.org).

**Attire and Equipment:** USEF rules and guidelines will be used for attire and equipment.  
For more information please review the USEF rule by clicking this link [WD 120 121 122 123](#).

**Protective headgear is required for ALL riders.**

## OFFICE INFORMATION

**Office Hours** The show office and stabling will open at noon on Friday, June 14. During the show, the show office will be open one hour before the first ride until one hour after the last ride. 859-825-8663

**Ride Times** Stabling assignments and provisional times will be available at [www.showsecretary.com](http://www.showsecretary.com). Management reserves the right to change the time schedule after provisional times have been posted. It is the responsibility of the rider to inform the management of any time conflicts as soon as possible after receiving the provisional schedule. **Official times** will be available at noon the day before each show. **Check online for official times.** Printed times will not be available. This show follows USEF GR830 with regard to rescheduled ride times.

Any changes after closing date initiated by rider or owner will incur a change fee.

**Schedule** Classes may not necessarily be run in the order listed in the class list. See page 16 for management rights. **Rail classes will run after all WD dressage tests are completed. Approximate start times will be given for rail classes, but exhibitors are responsible to keep track of the pace of the show and be on time for classes.**

**Schooling** will begin Friday, June 14 at noon. All competitors must have their current issued bridle number before riding. Schooling on Friday will continue until dusk. Saturday schooling will be available *after* the show until dusk.

**Hand-walking** of unmounted horses is allowed around the exterior of the competition rings from sunrise until 30 minutes before the first ride. No mounted horses allowed.

**Bridle numbers** All horses must always wear current issued bridle numbers or back numbers when out of stall. **Anyone mounting, getting on, riding, or trying a horse at the facility during the weekend of the show (including warmup day) must sign a show release form in the show office.**

**Please contact show secretary for any questions regarding entering competition/entry forms.**

## SERVICES

**Announcements** Class announcements and ride time announcements are a courtesy to the exhibitor and not all shows provide the capability of public address announcements. Exhibitors are responsible for presenting themselves to the ring at their designated time and accept the full responsibility for doing so. Competitions offering public announcements will make every effort to maintain a working PA system, but it is stressed that it is still the exhibitors' responsibility to be on time. No protest will be upheld, nor any ride time changed, on the basis of a PA breakdown or missed announcement. Ring stewards will also make every effort to keep people informed and entering the ring in a timely fashion. Exhibitors are responsible for knowing the correct show time and their scheduled performance time regardless of PA announcements or ring stewards. No protest will be upheld, nor ride time changed due to failure of the exhibitor to meeting their responsibilities.

**Bedding/Hay/Stall Mats/Turn-Out Paddocks** No bedding will be supplied. You are responsible for reserving/ordering your own straw, shavings, stall mats, turn-out paddocks. *It is requested you order before your arrival.* Contact Dever at [www.deverinc.com](http://www.deverinc.com) or [info@deverinc.com](mailto:info@deverinc.com) **Late Arrivals:** Bring your own bedding if you are planning to arrive after 6 p.m. Dever's normal business hours are from 8 a.m. to 7 p.m. If arriving after 6 p.m., contact Dever earlier in the day to ensure receipt of your bedding that night.

**Golf Carts** available for rent from Dever, Inc. Click [HERE](#) for online reservations. Call 859-233-9702 or [info@deverinc.com](mailto:info@deverinc.com)

**Photographer** Lisa Michelle Dean Photography. To pre-register for photograph make sure to check the Facebook page for signups or contact Lisa at [LMDKidpower@aol.com](mailto:LMDKidpower@aol.com) or 502-338-0216. There will be pre-registration package specials.

**Farrier** Jeremiah Zimmer will be on call each day 254-595-2700.

**Emergency Medical Service (EMS)** Alpha Event Medical will be on-site each show day.

**Veterinarian** Rood & Riddle 859-233-0371, Lexington, KY. On call.

## STABLING and GROUNDS INFORMATION

**Exhibitors are not permitted to attach nails or screws to barns.  
Only fans with 3-prong plugs permitted in barns.**

**Stabling** 10 x 10 Permanent stalls with sliding doors and asphalt floors. Early arrivals must notify the show secretary and pay all appropriate early arrival stall fees. See fee schedule. If your stall is used prior to your paid arrival date, you will be charged an early arrival stall fee of \$65 per day. The stalls are monitored daily by the KHP and KDA. Setting up your stalls prior to horses arriving does get charged by the KHP as a stall being used so, therefore, KDA will have to bill you an early arrival stall fee. Moving or changing of any horse or tack stall without prior approval of the show secretary may incur a \$50 penalty.

**Groups** Please note stabling groups with your entry. Your group should decide on a "group name" that all competitors provide on their entry. Stabling requests honored when possible.

**All entries must pay either a stall fee or a trailer-in fee per horse.**

Setting up or bedding a stall prior to noon on Friday will be charged an early arrival fee, whether occupied by a horse or not. Horses staying after 8 a.m. on Monday will be charged a late departure fee.

**No bedding will be supplied. You may bring your own or see page 7 how to order from Dever.**

**Footing/Arena** Sand/clay base arenas and warmups. Lungeing on the track on sand/clay base footing. The small 20m x 40m ring may be used for Introductory and Basic levels. All other classes will be in the standard 20m x 60m ring.

No one on foot (except leadline handlers, ring stewards, equipment checkers, emergency medical service, and show management) is allowed in designated warmups. ***Coaches, trainers, spectators, and other unmounted individuals must stand outside fence or partition of warm-up arenas. Lungeing permitted in designated outdoor areas only. All horses in the warmup arenas must wear their current issued competition numbers.***

If tack adjustments or rider changes are needed, personnel must perform them outside of the arena.

**Golf Carts** Golf carts will only be permitted at the Dressage Complex in designated parking areas. These areas will be marked. Only KDA Official golf carts will be allowed near any rings or warmup.

**WANT A FREE STALL (Value of \$95) Send us \$300 in  
ADVERTISING or SPONSORS and you get one stall free!! Advertising and  
Sponsorship Forms are in this prize list and can be found on:**

[www.KentuckyDressageAssociation.com](http://www.KentuckyDressageAssociation.com)



## AWARDS

**Scores** It is the responsibility of the competitor to verify the accuracy of all scores. Scoring errors must be reported to the Show Secretary within one hour of the official posting of the scores from the last class of the show day during which the score was earned. Tests will be scored electronically and streamed continuously. You may check your score at [www.showsecretary.com](http://www.showsecretary.com).

**Ties** In case of equality of points the competitor with the highest marks received under General Impressions shall be declared the winner. When the scores for General Impressions are equal the horses must remain tied. Errors on a test may not be used to break ties.

**Class Awards** First place award and six ribbons for each class for divisions specified on the class list. When classes are posted as **final online**, you may pick up your ribbons. Paper results pages will NOT be posted. Management reserves the right to make any changes required by circumstances. One set of ribbons will be awarded for each class. Any rider may enter these classes. Upon request, awards and ribbons not picked up by the end of the show will be mailed to the winners at their expense.

**High Score Ribbons** Champion ribbons will be awarded each day for the following three divisions- open, AA, and Jr/YR. One champion ribbon will be awarded for all divisions of nongaited horses. All levels are included, Introductory through level 5. Rail classes are not eligible for high score ribbons.



AQHA points earned in dressage and western dressage count towards Register of Merits, Superiors and other AQHA awards.

Points are based on percentage scoring, and the number of horses in a class does not determine points earned. Refer to the [AQHA Official Handbook of Rules and Regulations](#) for details.

**Riders who are AQHA members and want their scores submitted to AQHA must pay \$10/horse to the show secretary upon arrival at the show. Cash or checks made payable to KDA are accepted.**

**\$10 Payment must be received before competing.**

## VACCINATION, HEALTH CERTIFICATE, DOGS, and LIABILITY INFORMATION

**Equine Vaccination Rule** All equine entering this competition must provide with their entry, proof of current flu/rhino vaccinations within 6 months of the show BUT should be no later than 7 days before the show. Please read GR845 for full explanation.

Exhibitors should exercise extreme caution before medicating their horses and should be aware of the US EQUESTRIAN FEDERATION rules governing drugs and medications. Any questions about the use of certain medications and regarding Rule IV should be directed to the USEF Federation Equine Drugs and Medications Program, 956 King Avenue, Columbus, Ohio 43212-2655. (800) 633-2472, (614) 299-7707, FAX (614) 299-7706.

**Kentucky Health Regulations** Owners with horses from other states are responsible to check for most up-to-date health regulation Kentucky State Veterinarian website information before arrival.

<http://www.kyagr.com/statevet/import-equine.html>

All horses entering Kentucky Horse Park grounds must have valid proof of negative Coggins test (within 12 months). A 30-day certificate of veterinary inspection is required for all horses arriving from outside the state of Kentucky. All horses considered Kentucky based must have a certificate of veterinary inspection dated within 12 months. Horses who fail to arrive with appropriate paperwork will not be allowed to unload on park grounds.

**Liability** Horses by their inherent nature present a risk. **Neither the organizing/show committee, the show volunteers and staff, the facility or its owners, any host GMO or USEF or their members will be responsible for any damage, injury, loss to persons, horses, or property of exhibitors or spectators/attendees. All owners and competitors are personally responsible for damages to third parties caused by themselves, their employees, their agents or their horses. They are therefore strongly advised to take out third-party insurance providing full coverage for participation in equestrian events at home and abroad, and to keep the policy up-to-date.**

Each participant in an equestrian activity expressly assumes the risk of and legal responsibility for any injury, loss or damage to person or property which results from participation in an equestrian activity. Each participant shall have the sole individual responsibility for knowing the range of his or her own ability to manage, care for, and control a particular horse or perform a particular equestrian activity, and it shall be the duty of each participant to act within the limits of the participant's own ability, to maintain reasonable control of the particular horse or horses at all times while participating in an equestrian activity, to heed all posted warnings, to perform equestrian activities only in an area or in facilities designated by the horseman and to refrain from acting in a manner which may cause or contribute to the injury of anyone. If while actually riding in an equestrian event, any participant collides with any object or person, except an obviously intoxicated person of whom the horseman is aware, or if the participant falls from the horse or from a horse-drawn conveyance, the responsibility for such collision or fall shall be solely that of the participant or participants involved and not that of the horseman.

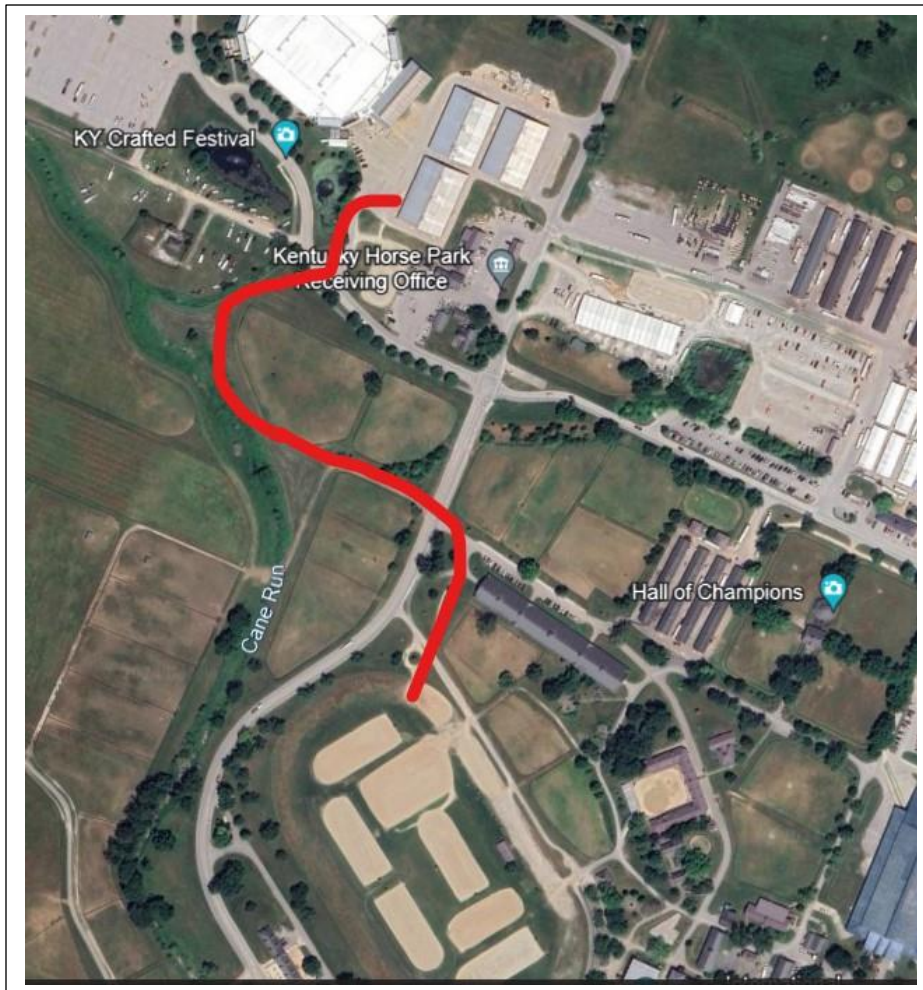
**Accidents** A participant involved in an accident shall not depart from the area or facility where the equestrian activity took place without leaving personal identification, including name and address, or without notifying the proper authorities, or without obtaining assistance when that person knows or reasonably should know that any other person involved in the accident is in need of medical or other assistance.

**Important notice to all affected parties** Third parties may come upon the property or enter the facilities where any herein described or listed event will occur; provided, that this is a license to enter the premises, for the purpose of observing or participating in the event, but not otherwise, and such license to any individual is subject to revocation by the owner, lessee or organizer, and entry for any purpose other than granted herein, shall be deemed criminal trespass and subject to appropriate legal proceedings.

**Dogs** are not permitted to be loose on competition grounds and must be held on a leash or otherwise restrained. Individuals must not lead dogs on a leash while mounted. Dog owners are solely responsible for any damages, claims, losses or actions resulting from their dogs' behaviors. Dog owners failing to comply with this rule will be issued a Yellow warning card and may be subject to penalty under Chapters 6 and 7. (GR1301.6) No other pets or livestock other than horses and mules allowed on grounds.

## DIRECTIONS and MAP

**Directions** The Kentucky Horse Park is located north of Lexington, KY, at 4089 Iron Works Parkway, Lexington, KY 40511. From I-75, take Exit 120. From other highways, watch for Kentucky Horse Park signs. Enter main gate entrance of the park, watch for signs to KDA stabling.



## CONCESSIONS and ACCOMMODATIONS

**Concessions** Concessions will be open. Check Kentucky Horse Park website for additional information.  
[www.kyhorsepark.com](http://www.kyhorsepark.com)

### Hotel Accommodations

#### Quality Inn

1938 Stanton Way, Building A  
Lexington, KY 40511  
859-413-2765

#### Embassy Suites

1801 Newtown Pike, Lexington, KY 40511  
(859) 455-5000

**Hampton Inn**, 128 Darby Drive, Georgetown, KY 40324  
(502) 867-4888

free hot breakfast and internet, indoor pool, fitness and business centers

**Kentucky Horse Park Campground** Call the Campground Store at (800) 370-6416 or Reserve America at (888) 4KY-PARK or (888) 459-7275 to find out if RV spaces are available. Reservations can also be made by clicking [HERE](#).

### Lexington Activities

**Kentucky Bourbon Tours at Woodford Reserve** [www.woodfordreserve.com](http://www.woodfordreserve.com)

**Tours of Lexington Horse Farms** [www.bluegrasstours.com](http://www.bluegrasstours.com)

## KDA INFORMATION AND MEMBERSHIP

**The Kentucky Dressage Association** is a nonprofit organization established to encourage participation and education in dressage. We sponsor competitions, clinics, symposiums and a newsletter with *special* consideration for our members. We have an extensive awards program, an incentive for horse and rider to compete and improve. Each KDA membership includes a group membership to the USDF, entitling member to USDF mailings, and other benefits. See [www.USDF.org](http://www.USDF.org) for more information.

Please visit the KDA website by clicking [HERE](#).

and Kentucky Dressage Association  Facebook page.

Click [HERE](#) to join  
KDA online.



New for 2024- no parking fees for KHP.

### **TOP 10 RULES OF THE KHP**

*INFORMATION MUST BE POSTED IN EVENT PRIZE LIST OR COMPETITOR INFORMATION*

1. PARKING – Seasonal parking passes may be pre-purchased online or at the parking booth upon arrival for \$80. Weekly passes may be purchased upon arrival for \$18. All trailers must park in approved lot. NO PARKING is allowed in the barn area; this is for active loading and unloading only. KHP reserves the right to tow any vehicle that is not parked in an approved parking space.
2. CAMPING – All those who wish to camp must go do so in the Campground, unless prior arrangements are made through KHP management. Please call (888) 4KY-PARK or (888) 459-7272 or reserve online at [www.park.ky.gov](http://www.park.ky.gov). Groups of 20 or more, please call (859) 259-4257 or (800) 370-6416. Check out time is noon and strictly enforced; violators will be towed.
3. GOLF CARTS/MOPEDS ETC. – Use of these is a privilege, not a right, extended to show participants. Must be at least 16 years old with a valid driver's license. No ATVs or dirt bikes over 50 cc are allowed on KHP property.
4. DOGS – Must be on a 6' leash at all times or suitably restrained in a tack stall or crate. Loose animals will be removed from the grounds at the owner's expense. DO NOT LEAVE DOGS IN VEHICLES.
5. HORSES AND HORS DRAWN VEHICLES – Horses and carriages always have right of way.
6. EXHIBITOR ISSUES/SPECIAL REQUEST – All non-emergency problems or special request must be relayed through show management to ensure prompt attention.
7. PACKAGES/DELIVERIES – The Park is not responsible for any deliveries to an event or event participant. Please plan to have packages delivered to your hotel. Any packages delivered to KHP may be returned to sender or assessed a freight handling fee.
8. PARK ADMISISON – Reduced admission is available to event participants and must be obtained at the Visitor's Information Center.
9. ARRIVAL/DEPARTURES – Must comply with contracted ship in / ship out dates.
10. FIRE CODES – As of May 15, 2006, KHP will not allow the following and will be enforced:
  - a. Two wire appliances
  - b. Two wire extension cords
  - c. Light duty indoor extension cords
  - d. Three-way adaptors unless specifically designed for outdoor use
  - e. Any adaptor without 3-wire connections
  - f. Any cut or damaged cords

The link above does not work for the campground. This is the correct link:

<https://kyhorsepark.com/campground/>



# MAAPP

## MINOR ATHLETE ABUSE PREVENTION

### LEARN ABOUT MAAP POLICIES



Safe Sport Training



Local Travel



One-On-One Interactions



Social Media & Electronic Communications



Read about these & more at [usef.org/MAAPP](https://usef.org/MAAPP)

### REPORT MAAP POLICY VIOLATIONS



[usef.org/safe-sport/reporting](https://usef.org/safe-sport/reporting)

859-225-6915 or Text Anonymously 855-682-8733



## US EQUESTRIAN FEDERATION RULES

**“EVERY CLASS OFFERED HEREIN WHICH IS COVERED BY THE RULES AND SPECIFICATIONS OF THE CURRENT FEDERATION RULE BOOK WILL BE CONDUCTED AND JUDGED IN ACCORDANCE THEREWITH.”**

**US EQUESTRIAN FEDERATION** rules are in force from the moment show management allows access to the show grounds. This includes conduct, correct saddlery and equipment, and attire.

**USEF MEMBERSHIP STATEMENT DR901.9** Life, senior active and junior active members shall be eligible to participate in all classes at Regular Competitions, Eventing Competitions at the Modified Level or above and Combined Driving Competitions at the Advanced Level, Dressage, Reining and Vaulting Competitions and Endurance Rides. A non-member may participate as a handler, rider, driver, owner, lessee, or agent at Regular Competitions, Eventing Competitions, Dressage Competitions, Reining Competitions and Combined Driving Competitions upon payment of a Show Pass fee. Participants in the following classes are exempted from the Requirements of this rule: 1) leadline; 2) exhibitions; 3) games and races; 4) classes for 4-H members; 5) walk trot and academy classes (academy classes are classes limited to horses used regularly in a lesson program); 6) USDF introductory level tests, pas de deux and quadrille classes; 7) assistant handlers in Dressage Sport Horse Breeding classes.

**MOTORIZED VEHICLE RULE** **RULE** In accordance with GR1301.7 and .8: Minors who do not have a valid driver’s license which allows them to operate a motorized vehicle in the state in which they reside will not be permitted to operate a motorized vehicle of any kind, including, but not limited to, golf carts, motorcycles, scooters, or farm utility vehicles, on the competition grounds of licensed competitions. Minors who have a valid temporary license may operate the above described motorized vehicles as long as they are accompanied by an adult with a valid driver’s license. The parent/legal guardian or individual who signs the entry blank as a parent or guardian of a minor operating a motorized vehicle in violation of this rule are solely responsible for any damages, claims, losses or actions resulting from that operation. Violations of this rule will be cause for penalties against those responsible for the child committing the offense. Wheelchairs and other mobility assistance devices for individuals with disabilities are exempt from this rule.

The unsafe use of personal electronic transport devices, as determined by the competition officials and management in their sole discretion, that do not require a driver’s license to operate, including but not limited to segways, hover boards, and single wheeled scooters is prohibited on competition grounds. Operating such devices in areas where people gather may be deemed “unsafe use” if there is a risk of harm to others. If the operator of the device is a minor, the parent/legal guardian or individual who signs the entry blank as a parent or guardian of a minor operating the device in violation of this rule is accountable and may be subject to penalties. Wheelchairs and other mobility assistance devices for individuals with disabilities are exempt from this rule.

**Sharps Containers** Competition management shall place a minimum of one sharps container per each competition, whether or not stabling is provided. Additionally, at least one sharps container per fifty occupied stalls for the disposal of needles and other disposable sharp instruments in convenient locations in barns housing competition horses. It is competition management’s responsibility to replace such containers when full and dispose of them properly.

**Competition management may fine any individuals including trainers, owners, exhibitors, or their agents up to \$100 for improper disposal of needles or other sharp disposable instruments.** Please do not use garbage cans for this material. If local law has different requirements, local law will prevail.

Current USEF helmet policy will be strictly enforced.

**Reminder** All USEF Life and Senior Active members, as well as participants who have regular contact with minor athletes, are required to comply with the U.S. Center for SafeSport training requirement to be eligible to participate in the competition. All participants must adhere to the U.S. Center for SafeSport Code, USEF Safe Sport Policy, and the Minor Athlete Abuse Prevention Policies. More information about these can be found at [www.usef.org](http://www.usef.org)

The listed rules are only general and are subject to change at the discretion of the Board of Directors of USEF.

CHECK THE CURRENT USEF 2024 RULE BOOK FOR ALL CHANGES AT [www.usef.org](http://www.usef.org)

## MANAGEMENT RIGHTS and SHOW POLICIES

Show Management reserves the right to change officials, rotate rings, limit entries, add, combine or cancel classes insufficiently filled, modify the schedule or reschedule classes after due notice to exhibitors, and modify or cancel awards and/or make whatever changes are required by circumstances to the competition specifications listed herein.

Show Management reserves the right to refuse or require withdrawal of an entry, accept conditionally, or to cancel any entries, disqualify any riders or exhibitors, and/or prohibit entries deemed sufficient by Show Management without claims for damages.

Every horse entered for competition will comply with the rules of the horse show management, but management will, in no case, be responsible for any loss or damage that may occur, and it shall be condition of entry that each exhibitor shall hold this horse show and the officials and employees of the show blameless for any loss or accident to his horse, employees, equipment, which may occur from sickness, fire or otherwise.

Exhibitors are notified that any act of discourtesy or disobedience to the judges or officials, on the part of the owner, manager, rider, or groom shall disqualify the horse, and the owner shall forfeit his entry fee and other fees.

Show management reserves to itself the power to prohibit any person from attending or showing a horse in the ring and to remove any groom or horse from the show without being liable for compensation.

No person will be allowed in the show ring during the time of judging except the exhibitor and those having official or requested duties to perform.

It is the tradition of the show that riders be correctly attired for the class in question, that attendants be neatly dressed and the horses properly presented. Management may in its discretion bar any person from entering the ring if not suitable presented to appear before an audience.

Show Management reserves the right to interpret all questions and conditions regarding or arising out of any incident in the show without claims for damages or recourse of any kind. All questions not covered in these rules and regulations shall be decided by the horse show management; their decision will be final.





# Kentucky Dressage Association

## KDA Class Sponsors

Being a class sponsor is a great way to show your support for KDA. To show our appreciation, your name will be listed in the show program and announced at the beginning of your sponsored class.

Class Sponsor Name: \_\_\_\_\_

Class(es) sponsoring: \_\_\_\_\_

E-mail: \_\_\_\_\_ \$50 per class X \_\_\_\_\_ = \_\_\_\_\_

Return this page and your check to:

Vivian Overcash  
124 Lee Drive  
Floyds Knobs, IN 47119

Questions – e-mail [KDA.Treasurer1@gmail.com](mailto:KDA.Treasurer1@gmail.com)

Please note it will be first come first serve on class sponsorships and we can not guarantee your class will have entries, we will do our best to match your request. Multiple classes can run within the same block for example: Open, AA, and Jr rides will be mixed but one sponsorship covers either the Open, AA or Jr, not all three.

Sponsorships are tax deductible; KDA is a 501(c)(3) organization.

Details for all events will be on our website : [www.kentuckydressageassociation.com](http://www.kentuckydressageassociation.com) and Facebook page,

2024

Official Use Only  
BRIDLE #

COMPETITION NAME \_\_\_\_\_ COMPETITION DATES \_\_\_\_\_

NAME OF HORSE		PREVIOUS NAME (IF ANY)		USEF#	USDF#	FOR SALE
						<input type="checkbox"/>
BREED	SEX	HEIGHT	COLOR	COGGINS DATE (ENCLOSED COPY)	SIRE	DAM
DAM'S SIRE		COUNTRY OF BIRTH	YEAR OF BIRTH	BREEDER	FEI/PASSPORT #	GROOM

**RIDER/HANDLER** \_\_\_\_\_

USEF# \_\_\_\_\_ USDF# \_\_\_\_\_ FEI/LOCAL# \_\_\_\_\_

ADDRESS \_\_\_\_\_

CITY/ST/ZIP \_\_\_\_\_

CELL PHONE \_\_\_\_\_ JR/YOUNG RIDER BIRTHDAY \_\_\_\_\_

EMAIL ADDRESS \_\_\_\_\_

RIDER CITIZENSHIP (IF NOT USA) \_\_\_\_\_

RIDER STATUS (CIRCLE ONE): JR/YG  AA  OPEN

**OWNER** \_\_\_\_\_

USEF# \_\_\_\_\_ USDF# \_\_\_\_\_ LOCAL# \_\_\_\_\_

ADDRESS \_\_\_\_\_

CITY/ST/ZIP \_\_\_\_\_

CELL PHONE \_\_\_\_\_

EMAIL ADDRESS \_\_\_\_\_

OWNER CITIZENSHIP (IF NOT USA) \_\_\_\_\_

**TRAINER** \_\_\_\_\_

USEF# \_\_\_\_\_ USDF# \_\_\_\_\_ LOCAL# \_\_\_\_\_

ADDRESS \_\_\_\_\_

CITY/ST/ZIP \_\_\_\_\_

CELL PHONE \_\_\_\_\_

EMAIL ADDRESS \_\_\_\_\_

**COACH** \_\_\_\_\_

USEF# \_\_\_\_\_ USDF# \_\_\_\_\_ LOCAL# \_\_\_\_\_

ADDRESS \_\_\_\_\_

CITY/ST/ZIP \_\_\_\_\_

Please complete all three pages. Reverse MUST be SIGNED.

CLASS No.	DIVISION	CLASS DESCRIPTION	QUAL Y/N	FEES

SUBTOTAL CLASS FEES AND QUALIFYING FEES		
OFFICE FEE AND/OR BRIDLE # FEE		
KHP Equine Facility Fee		\$10
STABLING FEES 0 STALL @ \$0 /STALL		
TACK STALLS 0 STALL @ \$0 /STALL		0
BEDDING 0 BALES @ \$0 /BALE		0
NON COMPETING HORSE FEE		0
SPONSORSHIP		
GROUNDS FEE OR OTHER FEES _____		
OTHER _____		
LATE/CHANGE/BANK CHARGES FOR CC		
<b>TOTAL FEES</b>		<b>0</b>

Stabling Information & Special Requests: Please list only ONE name (either individual or barn) for entire group (so we can get everyone together)

Group/Self	Tue	Wed	Thu	Fri	Sat	Sun	Mon
Stalls							
Tack Stalls							

Stable Group: \_\_\_\_\_ Contact: \_\_\_\_\_

Revised 11/2023

**WARNING - UNDER KENTUCKY LAW, AN EQUINE ACTIVITY SPONSOR OR EQUINE PROFESSIONAL SHALL NOT BE LIABLE FOR ANY INJURY TO, OR THE DEATH OF A PARTICIPANT IN EQUINE ACTIVITIES RESULTING FROM THE INHERENT RISKS OF EQUINE ACTIVITIES. Code of Kentucky H8 239**



**FEDERATION ENTRY AGREEMENT**

By entering a Federation-licensed Competition and signing this entry blank as the Owner, Lessee, Trainer, Manager, Agent, Coach, Driver, Rider, Handler, Vaultler or Longeur and on behalf of myself and my principals, representatives, employees and agents, I agree that I am subject to the Bylaws and Rules of the United States Equestrian Federation, Inc. (the "Federation") and the local rules of \_\_\_\_\_ (Competition). I agree to be bound by the Bylaws and Rules of the Federation and of the competition. I will accept as final the decision of the Hearing Committee on any question arising under the Rules, and agree to release and hold harmless the competition, the Federation, their officials, directors and employees for any action taken under the Rules. I represent that I am eligible to enter and/or participate under the Rules, and every horse I am entering is eligible as entered. I also agree that as a condition of and in consideration of acceptance of entry, the Federation and/or the Competition may use or assign photographs, videos, audios, cable - casts, broadcasts, internet, film, new media or other likenesses of me and my horse taken during the course of the competition for the promotion, coverage or benefit of the competition, sport, or the Federation. Those likenesses shall not be used to advertise a product and they may not be used in such a way as to jeopardize amateur status. I hereby expressly and irrevocably waive and release any rights in connection with such use, including any claim to compensation, invasion of privacy, right of publicity, or to misappropriation. The construction and application of Federation rules are governed by the laws of the State of New York, and any action instituted against the Federation must be filed in New York State. See GR908.4.

If not currently a USEF Active Competing member or Subscriber, I acknowledge that I will be enrolled for no cost as a USEF Fan and my USEF Fan Account will continue to annually automatically renew in USEF's sole discretion. Additionally, I acknowledge that the benefits of a USEF Fan are subject to change without notice. USEF may in its sole discretion, at any time, terminate my USEF Fan status. I acknowledge that I may opt out at any time by going to My USEF Dashboard or calling (859) 810-8733.

**BY SIGNING BELOW, I AGREE** that I have read, understand, and agree to be bound by all applicable Federation Bylaws, rules, and policies including the USEF Safe Sport Policy and Minor Athlete Abuse Prevention Policies (MAAPP) as published at [www.usef.org](http://www.usef.org), as amended from time to time, as well as all terms and provisions of this Prize List. If I am signing and submitting this Agreement electronically, I acknowledge that my electronic signature shall have the same validity, force and effect as if I affixed my signature by my own hand.

**RIDER/DRIVER/HANDLER/VAULTER/LONGEUR** (mandatory)

Signature: \_\_\_\_\_

Print Name: \_\_\_\_\_

**TRAINER** (mandatory)

Signature: \_\_\_\_\_

Print Name: \_\_\_\_\_

**OWNER/AGENT** (mandatory)

Signature: \_\_\_\_\_

Print Name: \_\_\_\_\_

**COACH** (if applicable)

Signature: \_\_\_\_\_

Print Name: \_\_\_\_\_

Parent/Guardian Signature: (Required if Rider/Driver/Handler/Vaultler/Longeur is a minor) \_\_\_\_\_

Print Parent//Guardian Name: \_\_\_\_\_ Emergency Contact Phone No. \_\_\_\_\_

Is Rider/Driver/Vaultler a U.S. Citizen:  Yes  No

Refunds of less than \$15 will be considered donations to the KDA Grant Fund unless owners opt out of the donation opportunity by checking this box or by notification to show secretary at the show.



# WAIVER AND RELEASE OF LIABILITY, ASSUMPTION OF RISK AND INDEMNITY AGREEMENT

For and in consideration of United States Equestrian Federation, Inc. dba US Equestrian ("USEF") allowing me, the undersigned, to participate in any capacity (including as a rider, driver, handler, vaulter, longeur, lessee, owner, agent, coach, official, trainer or volunteer) in a USEF sanctioned, licensed or approved event or activity, including but not limited to equestrian clinics, practices, shows, competitions and related or incidental activities and ("USEF Event" or "USEF Events"); I, for myself, and on behalf of my spouse, children, heirs and next of kin, and any legal and personal representatives, executors, administrators, successors, and assigns, hereby agree to and make the following contractual representations pursuant to this Agreement (the "Agreement"):

A. RULES AND REGULATIONS: hereby agree that I have read, understand, and agree to be bound by all applicable Federation Bylaws, rules, and policies including the USEF Safe Sport Policy and Minor Athlete Abuse Prevention Policies (MAAPP) as published at www.usef.org, as amended from time to time.

B. ACKNOWLEDGMENT OF RISK: I knowingly, willingly, and voluntarily acknowledge the inherent risks associated with the sport of equestrian and know that horseback riding and related equestrian activities are inherently dangerous, and that participation in any USEF Event involves risks and dangers including, without limitation, the potential for serious bodily injury (including broken bones, head or neck injuries), sickness and disease (including communicable diseases), trauma, pain & suffering, permanent disability, paralysis and death; loss of or damage to personal property (including my mount & equipment) arising out of the unpredictable behavior of horses; exposure to extreme conditions and circumstances; accidents involving other participants, event staff, volunteers or spectators; contact or collision with other participants and horses, natural or manmade objects; adverse weather conditions; facilities issues and premises conditions; failure of protective equipment (including helmets); inadequate safety measures; participants of varying skill levels; situations beyond the immediate control of the USEF Event organizers and competition management; and other undefined, not readily foreseeable and presently unknown risks and dangers ("Risks").

### WARNING:

**Under Kentucky law, a farm animal activity sponsor, farm animal professional, or other person does not have the duty to eliminate all risks of injury of participation in farm animal activities. There are inherent risks of injury that you voluntarily accept if you participate in farm animal activities.**

C. ASSUMPTION OF RISK: I understand that the aforementioned Risks may be caused in whole or in part or result directly or indirectly from the negligence of my own actions or inactions, the actions or inactions of others participating in the USEF Events, or the negligent acts or omissions of the Released Parties defined below, and I hereby voluntarily and knowingly assume all such Risks and responsibility for any damages, liabilities, losses, or expenses that I incur as a result of my participation in any USEF Events. I also agree to be responsible for any injury or damage caused by me, my horse, my employees or contractors under my direction and control at any USEF Event.

D. WAIVER AND RELEASE OF LIABILITY, HOLD HARMLESS AND INDEMNITY: In conjunction with my participation in any USEF Event, I hereby release, waive and covenant not to sue, and further agree to indemnify, defend and hold harmless the following parties: USEF, USEF Recognized Affiliate Associations, the United States Olympic & Paralympic Committee (USOPC), USEF clubs, members, Event participants (including athletes/riders, coaches, trainers, judges/officials, and other personnel), the Event owner, licensee, and competition managers; the promoters, sponsors, or advertisers of any USEF Event; any charity or other beneficiary which may benefit from the USEF Event; the owners, managers, or lessors of any facilities or premises where a USEF Event may be held; and all directors, officers, employees, agents, contractors, and volunteers of any of the aforementioned parties (**Individually and Collectively, the "Released Parties" or "Event Organizers"**), with respect to any liability, claim(s), demand(s), cause(s) of action, damage(s), loss, or expense (including court costs and reasonable attorney fees) of any kind or nature ("**Liability**") which may arise out of, result from, or relate in any way to my participation in the USEF Events, including claims for Liability caused in whole or in part by the negligent acts or omissions of the Released Parties.

E. COMPLETE AGREEMENT AND SEVERABILITY CLAUSE: This Agreement represents the complete understanding between the parties regarding these issues and no oral representations, statements or inducements have been made apart from this Agreement. If any provision of this Agreement is held to be unlawful, void, or for any reason unenforceable, then that provision shall be deemed severable from this Agreement and shall not affect the validity and enforceability of any remaining provisions.

**I HAVE CAREFULLY READ THIS DOCUMENT IN ITS ENTIRETY, UNDERSTAND ALL OF ITS TERMS AND CONDITIONS, AND KNOW IT CONTAINS AN ASSUMPTION OF RISK, RELEASE AND WAIVER FROM LIABILITY, AS WELL AS A HOLD HARMLESS AND INDEMNIFICATION OBLIGATIONS.**

By signing below, that I have read, understand, and agree to be bound by all applicable Federation Bylaws, rules, and policies including the USEF Safe Sport Policy and Minor Athlete Abuse Prevention Policies (MAAPP) as published at www.usef.org, as amended from time to time, as well as all terms and provisions of this Prize List. If, despite this Agreement, I, or anyone on my behalf or the minor's behalf, makes a claim for Liability against any of the Released Parties, I will indemnify, defend and hold harmless each of the Released Parties from any such Liabilities as the result of such claim.

**The parties agree that this agreement may be electronically signed. The parties agree that the electronic signatures appearing on this agreement are the same as handwritten signatures for the purposes of validity, enforceability, and admissibility.**

RIDER/DRIVER/HANDLER/VAULTER/LONGEUR  OWNER  TRAINER  OFFICIAL  STAFF  VOLUNTEER  COACH (IF APPLICABLE)

Signature: \_\_\_\_\_ Date: \_\_\_\_\_ Print Name: \_\_\_\_\_

Parent/Guardian Signature: (Required if Rider/Driver/Handler/Vaulter/Longeur is a minor) \_\_\_\_\_ Date: \_\_\_\_\_

Print Parent//Guardian Name: \_\_\_\_\_ Emergency Contact Phone No. \_\_\_\_\_

11.16.23



Dear USEF Participant:

USEF thanks you for participating in this competition and your support of USEF's continuous efforts to provide the safest environment possible for our athletes and other participants. Strategies for safeguarding athletes continue to evolve, and we are fully committed to keeping pace with best practices.

The purpose of this letter is to remind you that you are bound by the U.S. Center for SafeSport Code, USEF Safe Sport Policy, and [Minor Athlete Abuse Prevention Policies](#), also known as the MAAPP. This includes the SafeSport Training requirement for adult members and participants who have regular contact with or authority over minor athletes. Additionally, please be reminded about reporting obligations. Any concerns that are non-sexual in nature, please use the [USEF Safe Sport Incident Reporting Form](#) available on the USEF website. Concerns or suspicions regarding sexual misconduct must be reported to <https://safesport.i-sight.com/portal> and the authorities if a minor is involved. All of this information can be found in the USEF [Safe Sport Policy](#).

Please take a moment to review the new USEF [Safe Sport web pages](#) on the USEF website to find comprehensive resources regarding USEF Safe Sport efforts. You can also contact Sarah Gilbert, USEF Safe Sport Program Coordinator, at [sgilbert@usef.org](mailto:sgilbert@usef.org) for any questions or concerns relating to the USEF Safe Sport program.

Thank you for your support and for helping us bring the joy of horse sports to as many people as possible!