



# 7TH ANNUAL 2019 WDA WESTERN DRESSAGE WORLD CHAMPIONSHIP SHOW

October 2–6, 2019 ♦ Lazy E Arena ♦ Guthrie, Oklahoma



## CELEBRATING THE JOURNEY

OFFICIAL SHOW PROGRAM





# WATCH THE SHOW LIVE



**ORDER  
VIDEOS!**

RECORD YOUR  
RIDES ONLY \$35  
PER CLASS!

FIND EVERYTHING ON OUR WEBSITE AT

**TOTALHORSECHANNEL.COM**



## CELEBRATE THE JOURNEY! 2019 WDAA EVENTS

**TUESDAY • 6 PM • ROPER'S CANTINA**  
Welcome Pizza Party & Exhibitor's Meeting Free To All!  
Sponsored by USEF & City of Edmond

**WEDNESDAY • 6 PM • ROPER'S CANTINA**  
2019 WDAA Honors & Awards Dinner  
Tickets available in the WDAA Office \$25 per person

**FRIDAY • 6PM • ROPER'S CANTINA**  
Costume Freestyle Cocktail Party  
Snacks and Cash Bar  
Sponsored by American Warmblood Society &  
G190 Sport Horse Registry

**SATURDAY • 6 PM • ROPER'S CANTINA**  
Freestyle Fiesta and Silent Auction  
Watch the Freestyle class and stay for the presentation of the  
Junior, Amateur and Open winners!  
One free ticket per entry number  
\$30 tickets can be purchased at the WDAA office

**SUNDAY • ONE HOUR FOLLOWING LAST CLASS  
ROPER'S CANTINA**  
Awards Ceremony and Farewell Celebration  
Free to all!  
Presentation of  
All Division, Breed High Score, Affiliate  
and Overall High Score Awards

**—Save The Date—  
2020 WDAA**

**Western Dressage World Championship Show**  
September 30–October 4, 2020  
Lazy E Arena • Guthrie, Oklahoma

## Table of Contents

|  |         |
|--|---------|
| Schedule of Activities .....                           | 3       |
| Welcome Letter <i>by President Cindy Butler</i> .....  | 2       |
| Table of Contents .....                                | 1       |
| Introductory Page .....                                | 5       |
| Welcome Letter <i>by Show Manager Cindy Reid</i> ..... | 8       |
| Saluting Our Sponsors .....                            | 9       |
| Show Committee & Executive Board ....                  | 10 & 11 |
| Lazy E Arena Welcome Letter .....                      | 12      |
| Meet Your Judges .....                                 | 14      |
| Meet Your Stewards .....                               | 15      |
| Honoring Our Past Champions .....                      | 16      |
| Lazy E Arena Site Map .....                            | 19      |
| Exhibitors .....                                       | 20      |

## GOLF CART PICK UP

Golf Carts will be available Tuesday AM at the WDAA Office in the covered arena.





**President of WDAA  
CINDY BUTLER**

# Welcome!

**W**elcome to the WDAA World Championships! I am excited that you have chosen to join us in our celebration of horses, riders, accomplishments, journeys and dreams! WDAA staff, contractors and volunteers have worked hard along with our partners at the Lazy E Arena to bring you the best World Show ever. Our Show Committee, manager and secretary have thought of everything to ensure you have a great time while you're here. Please join us in the Roper's Cantina throughout the week for numerous parties and festivities, where you can spend time with old friends and meet new ones. The WDAA Hospitality and Awards Office will be in the covered arena and will be staffed with people available to answer your questions. You may also purchase additional programs or dinner tickets for Saturday Night's Freestyle Fiesta or pick up your ribbons/tests/scores there! We're thrilled you all are here, and we look forward to a magical and fun-filled week!

— *Cindy Butler*



# THE 2019 WESTERN DRESSAGE WORLD CHAMPIONSHIP SHOW

## Tentative Show Schedule

FOR THE MOST ACCURATE LIST, CHECK THE DAY SHEETS IN THE HORSE SHOW OFFICE

*Sponsored by Anderson Veterinary Clinic*

### TUESDAY • 10/1/2019

**6:00PM • ROPER'S CANTINA** Welcome Pizza Party and Exhibitor's Meeting. **Free To All! Sponsored by USEF & City of Edmond**

### WEDNESDAY • 10/2/2019

| JUDGE   |                    |
|---|--------------------|
| <b>RING 1</b>   |                    |
| 01 Western Dressage Suitability Walk Jog<br><i>Sponsored by Twin Creek Stables, LLC</i>                                   | Brian MacMahon USA |
| 02 Western Dressage Suitability Open<br><i>Sponsored by Nancy &amp; Randy Conley</i>                                      | Brian MacMahon USA |
| 03 Western Dressage Suitability Gaited Horses<br><i>Sponsored by Tennessee Walking Horse Breeders And Exhibitors Assn</i> | Brian MacMahon USA |
| 04 Western Dressage Suitability Youth/Amateur<br><i>Sponsored by Debra Levlie</i>   | Brian MacMahon USA |
| 05 Western Dressage Hack Open   | Brian MacMahon USA |
| 06 Western Dressage Hack Gaited Horses<br><i>Sponsored by Mike &amp; Sara Patton, Meritage Farm</i>                       | Brian MacMahon USA |
| 07 Western Dressage Hack Youth/Amateur  | Brian MacMahon USA |
| 08 Western Dressage Equitation On Rail Walk/Jog Open  | Brian MacMahon USA |
| 09 Western Dressage Equitation Rail Walk/Jog/Lope Open Gaited<br><i>Sponsored by Highland Equine Mobile Service</i>       | Brian MacMahon USA |
| 10 Western Dressage Equitation Rail Walk/Jog/Lope Open  | Brian MacMahon USA |
| 11 Western Dressage Horsemanship Intro (Intro Pattern A)  | Brian MacMahon USA |
| 12 Western Dressage Horsemanship Basic (Basic Pattern A)  | Brian MacMahon USA |
| 13 Western Dressage Horsemanship (Basic Pat. A) Youth*  | Brian MacMahon USA |
| 14 Western Dressage Horsemanship (L1, Pat. A) Amateur<br><i>Sponsored by Relational Riding Academy</i>                    | Brian MacMahon USA |
| 15 Western Dressage Horsemanship (L1, Pat. A) Youth*  | Brian MacMahon USA |
| 16 Western Dressage Horsemanship (L2, Pat. A) Amateur   | Brian MacMahon USA |
| 17 Western Dressage Horsemanship (L2, Pat. A) Youth*  | Brian MacMahon USA |
| 18 Western Dressage Seat Medal Equitation Basic Pat. B Amateur  | Brian MacMahon USA |
| 19 Western Dressage Seat Medal Equitation Basic Pat. B Youth*<br><i>Sponsored by Roadshow Morgan</i>                      | Brian MacMahon USA |
| 20 Western Dressage Seat Medal Equitation Basic Pat. B Youth*   | Brian MacMahon USA |
| 21 Western Dressage Seat Medal Equitation (L1, Pat. B) Youth*<br><i>Sponsored by Blythewood Farm Morgans</i>              | Brian MacMahon USA |

**6:00PM • Roper's Cantina** WDAA Honors Awards Dinner/\$25.00 per ticket

### THURSDAY • 10/3/2019

| JUDGE   |                  |
|---|------------------|
| <b>RING 1</b>   |                  |
| 41GO WDAA Western Dressage Level 4 Test 1 Gaited Open<br><i>Sponsored by TWH Dressage on Facebook</i> | Joanne Coy USA   |
| 41O WDAA Western Dressage Level 4 Test 1 Open<br><i>Sponsored by Kathy Carlson</i>                    | Joanne Coy USA   |
| 31A WDAA Western Dressage Level 3 Test 1 Amateur  | Joanne Coy USA   |
| 41AJ WDAA Western Dressage Level 4 Test 1 Amateur Junior<br><i>Sponsored by MaryJo Hoepner</i>        | Joanne Coy USA   |
| 31GO WDAA Western Dressage Level 3 Test 1 Gaited Open<br><i>Sponsored by TWH Dressage on Facebook</i> | Joanne Coy USA   |
| 31O WDAA Western Dressage Level 3 Test 1 Open   | Joanne Coy USA   |
| 21A WDAA Western Dressage Level 3 Test 1 Junior   | Joanne Coy USA   |
| 21J WDAA Western Dressage Level 2 Test 1 Amateur<br><i>Sponsored by Nady Peters</i>                   | Joanne Coy USA   |
| 21GO WDAA Western Dressage Level 2 Test 1 Gaited Open   | Joanne Coy USA   |
| 21J WDAA Western Dressage Level 2 Test 1 Junior<br><i>Sponsored by Rancho Del Corazon</i>             | Joanne Coy USA   |
| 21O WDAA Western Dressage Level 2 Test 1 Open<br><i>Sponsored by Sally Plumley</i>                    | Dolly Hannon USA |
| 11GO WDAA Western Dressage Level 1 Test 1 Gaited Open<br><i>Sponsored by Gaited Gang of Florida</i>   | Dolly Hannon USA |
| 21O WDAA Western Dressage Level 2 Test 1 Open   | Dolly Hannon USA |

### RING 1 • EVENING

|  |                  |
|--|------------------|
| FS-I Introductory Freestyle Jr/AM/Open<br><i>Sponsored by ML Dodd MD, Psychiatric Associates Inc./ Nancy &amp; Randy Conley/Cynthia Collins, Luna Tunes Freestyles</i> | Dolly Hannon USA |
| FSG-I Gaited Introductory Freestyle Jr/AM/Open   | Dolly Hannon USA |

**Awards will be presented immediately following last ride of the evening**

### RING 2

|   |                |
|---|----------------|
| 11A WDAA Western Dressage Level 1 Test 1 Amateur<br><i>Sponsored by Laura Moss, In Memory of Alex Mooney</i>                    | Susan Lang USA |
| 11J WDAA Western Dressage Level 1 Test 1 Junior   | Susan Lang USA |
| 11O WDAA Western Dressage Level 1 Test 1 Open<br><i>Sponsored by Sally Plumley</i>  | Susan Lang USA |
| B1GO WDAA Western Dressage Basic Test 1 Gaited Open<br><i>Sponsored by Tennessee Walking Horse Breeders And Exhibitors Assn</i> | Susan Lang USA |
| B1J WDAA Western Dressage Basic Test 1 Junior<br><i>Sponsored by Shelby Cattle Company</i>                                      | Susan Lang USA |
| B1GAJ WDAA Western Dressage Basic Test 1 Gaited Amateur Junior  | Susan Lang USA |

\*YOUTH= 21 & Younger

### RING 3

|  |                      |
|--|----------------------|
| 11A WDAA Western Dressage Introductory Test 1 Amateur  | Melissa Creswick USA |
| 11GAJ WDAA Western Dressage Intro. Test 1 Gaited Amateur Junior<br><i>Sponsored by Mike &amp; Sara Patton, Meritage Farm</i> | Melissa Creswick USA |
| 11GO WDAA Western Dressage Introductory Test 1 Gaited Open   | Melissa Creswick USA |
| B1O WDAA Western Dressage Basic Test 1 Open<br><i>Sponsored by Carol Bishop</i>  | Melissa Creswick USA |

### RING 4

|   |                    |
|---|--------------------|
| 11O WDAA Western Dressage Introductory Test 1 Open  | Brian MacMahon USA |
| B1A WDAA Western Dressage Basic Test 1 Amateur<br><i>Sponsored by NC Western Dressage</i> | Brian MacMahon USA |
| 11J WDAA Western Dressage Introductory Test 1 Junior                                      | Brian MacMahon USA |

### FRIDAY • 10/4/2019

| JUDGE  |                |
|--|----------------|
| <b>RING 1</b>  |                |
| 12GO WDAA Western Dressage Level 1 Test 2 Gaited Open  | Susan Lang USA |
| 22A WDAA Western Dressage Level 2 Test 2 Amateur<br><i>Sponsored by Ashley Wallace</i>   | Susan Lang USA |
| 12GO WDAA Western Dressage Level 1 Test 2 Gaited Open  | Susan Lang USA |
| 22GO WDAA Western Dressage Level 2 Test 2 Gaited Open<br><i>Sponsored by Leslie Jeurink &amp; Dini Dixon Swanson, In Memory of Bruce Dixon Jr.</i> | Susan Lang USA |
| 22J WDAA Western Dressage Level 2 Test 2 Junior  | Susan Lang USA |
| 22O WDAA Western Dressage Level 2 Test 2 Open<br><i>Sponsored by Grand Finale Stables</i>  | Susan Lang USA |
| 32GO WDAA Western Dressage Level 3 Test 2 Gaited Open  | Susan Lang USA |
| 22O WDAA Western Dressage Level 2 Test 2 Open  | Susan Lang USA |
| 32A WDAA Western Dressage Level 3 Test 2 Amateur   | Susan Lang USA |
| 32O WDAA Western Dressage Level 3 Test 2 Open  | Susan Lang USA |
| 42AJ WDAA Western Dressage Level 4 Test 2 Amateur Junior<br><i>Sponsored by Ron McLoughlin &amp; Classical Stock Seat School of Arizona</i>        | Susan Lang USA |
| 42O WDAA Western Dressage Level 4 Test 2 Open<br><i>Sponsored by Nancy &amp; Randy Conley</i>  | Susan Lang USA |

### RING 1 • EVENING

|  |                  |
|--|------------------|
| FSC-B4 Costume Freestyle Test Of Choice Jr/AM/Open<br><i>Sponsored by Bruce Hamilton, Dressage Illustrated/ Cynthia Collins, Luna Tunes Freestyles/ML Dodd MD, Psychiatric Associates Inc.</i> | Dolly Hannon USA |
| FSCG-B4 Gaited Costume Freestyle Test Of Choice Jr/AM/Open   | Dolly Hannon USA |

**Awards will be presented immediately following last ride of the evening**

### RING 2

|   |                      |
|---|----------------------|
| 12A WDAA Western Dressage Level 1 Test 2 Amateur  | Melissa Creswick USA |
| 12J WDAA Western Dressage Level 1 Test 2 Junior   | Melissa Creswick USA |
| 12O WDAA Western Dressage Level 1 Test 2 Open<br><i>Sponsored by Sally Plumley</i>  | Melissa Creswick USA |
| B2GAJ WDAA Western Dressage Basic Test 2 Gaited Amateur Junior<br><i>Sponsored by TWH Dressage on Facebook</i>                            | Melissa Creswick USA |
| B2GO WDAA Western Dressage Basic Test 2 Gaited Open<br><i>Sponsored by Edward Marlewski, Spotted Saddle Horse Association of Illinois</i> | Melissa Creswick USA |
| B2J WDAA Western Dressage Basic Test 2 Junior<br><i>Sponsored by Glynis Walford, Shelby Cattle Company</i>                                | Melissa Creswick USA |

### RING 3

|   |                    |
|---|--------------------|
| B2O WDAA Western Dressage Basic Test 2 Open   | Dolly Hannon USA   |
| 12GAJ WDAA Western Dressage Intro. Test 2 Gaited Amateur Junior<br><i>Sponsored by Spotted Saddle Horse Association of Illinois</i> | Brian MacMahon USA |
| 12A WDAA Western Dressage Introductory Test 2 Amateur<br><i>Sponsored by HG Horseshoeing LLC</i>                                    | Brian MacMahon USA |
| 12GAJ WDAA Western Dressage Intro. Test 2 Gaited Amateur Junior   | Brian MacMahon USA |
| 12GO WDAA Western Dressage Introductory Test 2 Gaited Open<br><i>Sponsored by Marcia &amp; Scott Corbett</i>                        | Brian MacMahon USA |
| TR1 Therapeutic Riding Test Of Choice<br><i>Sponsored by Crossing Bridges Therapeutic Riding Center</i>                             | Brian MacMahon USA |

### RING 4

|  |                |
|--|----------------|
| B2A WDAA Western Dressage Basic Test 2 Amateur       | Joanne Coy USA |
| 12J WDAA Western Dressage Introductory Test 2 Junior | Joanne Coy USA |
| 12O WDAA Western Dressage Introductory Test 2 Open   | Joanne Coy USA |

**6:00PM • Roper's Cantina** Costume Freestyle Cocktail Party • Snacks and Cash Bar  
*Sponsored by American Warmblood Society & G190 Sport Horse Registry*

### SATURDAY • 10/5/2019

| JUDGE   |                      |
|---|----------------------|
| <b>RING 1</b>   |                      |
| 23GO WDAA Western Dressage Level 2 Test 3 Gaited Open                               | Melissa Creswick USA |
| 23J WDAA Western Dressage Level 2 Test 3 Junior                                     | Melissa Creswick USA |
| 43O WDAA Western Dressage Level 4 Test 3 Open<br><i>Sponsored by Elizabeth Roth</i> | Melissa Creswick USA |

# THE 2019 WESTERN DRESSAGE WORLD CHAMPIONSHIP SHOW

## Tentative Show Schedule

FOR THE MOST ACCURATE LIST, CHECK THE DAY SHEETS IN THE HORSE SHOW OFFICE

### SATURDAY • 10/5/2019 Continued

|   | Judge                |
|---|----------------------|
| 13GO WDAA Western Dressage Level 1 Test 3 Gaited Open<br><i>Sponsored by Foxey Rhythm Ranch</i><br><i>Sponsored by Spotted Saddle Horse Association of Illinois</i> | Melissa Creswick USA |
| 23A WDAA Western Dressage Level 2 Test 3 Amateur  | Melissa Creswick USA |
| 23O WDAA Western Dressage Level 2 Test 3 Open   | Melissa Creswick USA |
| 33GO WDAA Western Dressage Level 3 Test 3 Gaited Open<br><i>Sponsored by Tennessee Walking Horse Breeders &amp; Exhibitors Assn/Meritage Farm</i>                   | Dolly Hannon USA     |
| 33A WDAA Western Dressage Level 3 Test 3 Amateur  | Dolly Hannon USA     |
| 33O WDAA Western Dressage Level 3 Test 3 Open   | Dolly Hannon USA     |
| 33A WDAA Western Dressage Level 3 Test 3 Amateur  | Dolly Hannon USA     |
| 33J WDAA Western Dressage Level 3 Test 3 Junior<br><i>Sponsored by Paul &amp; Suzanne Murphree</i>  | Dolly Hannon USA     |

### RING 1 • EVENING

|  |                      |
|--|----------------------|
| FS-B4 Freestyle Test Of Choice Jr/Am/Open<br><i>Sponsored by Luna Tunes Freestyles/WCS Sporthorses/The Empowered Rider</i> | Melissa Creswick USA |
| FSG-B4 Gaited Freestyle Test Of Choice Jr/Am/Open<br><i>Sponsored by K&amp;M Pferdehof</i>                                 | Melissa Creswick USA |

Awards will be presented immediately following last ride of the evening

### RING 2

|   |                    |
|---|--------------------|
| 113A WDAA Western Dressage Level 1 Test 3 Amateur   | Brian MacMahon USA |
| 13J WDAA Western Dressage Level 1 Test 3 Junior   | Brian MacMahon USA |
| 13O WDAA Western Dressage Level 1 Test 3 Open<br><i>Sponsored by Sally Plumley</i>                  | Brian MacMahon USA |
| B3GO WDAA Western Dressage Basic Test 3 Gaited Open<br><i>Sponsored by TWH Dressage on Facebook</i> | Brian MacMahon USA |
| B3J WDAA Western Dressage Basic Test 3 Junior   | Brian MacMahon USA |
| B3GAJ WDAA Western Dressage Basic Test 3 Gaited Amateur Junior                                      | Brian MacMahon USA |
| B3J WDAA Western Dressage Basic Test 3 Junior   | Brian MacMahon USA |

### RING 3

|   |                  |
|---|------------------|
| B3O WDAA Western Dressage Basic Test 3 Open   | Joanne Coy USA   |
| I3A WDAA Western Dressage Introductory Test 3 Amateur<br><i>Sponsored by WDAWI</i>  | Joanne Coy USA   |
| I3GAJ WDAA Western Dressage Intro. Test 3 Gaited Amateur Junior   | Joanne Coy USA   |
| I3A WDAA Western Dressage Introductory Test 3 Amateur   | Joanne Coy USA   |
| I3GAJ WDAA Western Dressage Intro. Test 3 Gaited Amateur Junior<br><i>Sponsored by Spotted Saddle Horse Association of Illinois</i> | Joanne Coy USA   |
| I3GO WDAA Western Dressage Introductory Test 3 Gaited Open<br><i>Sponsored by Spotted Saddle Horse Association of Illinois</i>      | Dolly Hannon USA |
| TR2 Therapeutic Riding Test Of Choice   | Dolly Hannon USA |

### RING 4

|  |                  |
|--|------------------|
| B3A WDAA Western Dressage Basic Test 3 Amateur   | Dolly Hannon USA |
| I3J WDAA Western Dressage Introductory Test 3 Junior<br><i>Sponsored by Reflections Farm</i> | Susan Lang USA   |
| I3O WDAA Western Dressage Introductory Test 3 Open   | Susan Lang USA   |

**6:00PM • Roper's Cantina** Freestyle Fiesta and Silent Auction. Watch the Freestyle class and stay for the presentation of the Junior, Amateur and Open winners! One free ticket per entry number/\$30 tickets can be purchased at the WDAA office. *Sponsored by Heart of Texas Equestrian*

### SUNDAY • 10/6/2019

|  | Judge              |
|--|--------------------|
| <b>RING 1</b>  |                    |
| 24J WDAA Western Dressage Level 2 Test 4 Junior  | Brian MacMahon USA |
| 14GO WDAA Western Dressage Level 1 Test 4 Gaited Open<br><i>Sponsored by Big Barn Ranch</i>                        | Brian MacMahon USA |
| 44AJ WDAA Western Dressage Level 4 Test 4 Amateur Junior   | Brian MacMahon USA |
| 34A WDAA Western Dressage Level 3 Test 4 Amateur   | Brian MacMahon USA |
| 14GO WDAA Western Dressage Level 1 Test 4 Gaited Open<br><i>Sponsored by Marcia &amp; Scott Corbett</i>            | Brian MacMahon USA |
| 44O WDAA Western Dressage Level 4 Test 4 Open<br><i>Sponsored by Greg &amp; Lorna Cogan</i>                        | Brian MacMahon USA |
| 34GO WDAA Western Dressage Level 3 Test 4 Gaited Open  | Brian MacMahon USA |
| 24A WDAA Western Dressage Level 2 Test 4 Amateur<br><i>Sponsored by Lenore Smith, In the Memory of Alex Mooney</i> | Brian MacMahon USA |
| 24GO WDAA Western Dressage Level 2 Test 4 Gaited Open  | Brian MacMahon USA |
| 24O WDAA Western Dressage Level 2 Test 4 Open<br><i>Sponsored by Kathryn Carlson</i>                               | Brian MacMahon USA |
| 34O WDAA Western Dressage Level 3 Test 4 Open  | Brian MacMahon USA |
| <b>RING 2</b>  |                    |
| 14O WDAA Western Dressage Level 1 Test 4 Open<br><i>Sponsored by Sally Plumley</i>                                 | Joanne Coy USA     |
| 14J WDAA Western Dressage Level 1 Test 4 Junior  | Joanne Coy USA     |
| 14A WDAA Western Dressage Level 1 Test 4 Amateur   | Joanne Coy USA     |
| B4GAJ WDAA Western Dressage Basic Test 4 Gaited Amateur Jr.  | Joanne Coy USA     |

|   |                |
|---|----------------|
| B4GO WDAA Western Dressage Basic Test 4 Gaited Open | Joanne Coy USA |
| B4J WDAA Western Dressage Basic Test 4 Junior       | Joanne Coy USA |
| B4GO WDAA Western Dressage Basic Test 4 Gaited Open | Joanne Coy USA |

### RING 3

|  |                  |
|--|------------------|
| I4A WDAA Western Dressage Introductory Test 4 Amateur  | Susan Lang USA   |
| I4GAJ WDAA Western Dressage Intro. Test 4 Gaited Amateur Jr.<br><i>Sponsored by Spotted Saddle Horse Association of Illinois</i> | Dolly Hannon USA |
| I4GO WDAA Western Dressage Intro. Test 4 Gaited Open<br><i>Sponsored by Marcia &amp; Scott Corbett</i>                           | Susan Lang USA   |
| B4O WDAA Western Dressage Basic Test 4 Open  | Susan Lang USA   |

### RING 4

|   |                      |
|---|----------------------|
| I4J WDAA Western Dressage Introductory Test 4 Junior                                      | Dolly Hannon USA     |
| I4O WDAA Western Dressage Introductory Test 4 Open  | Melissa Creswick USA |
| B4A WDAA Western Dressage Basic Test 4 Amateur<br><i>Sponsored by Hanson Grain/Devine</i> | Melissa Creswick USA |

### 1 HOUR FOLLOWING LAST CLASS • ROPER'S CANTINA

Awards Ceremony and Farewell Celebration. Free to all! Presentation of All Division, Breed High Score, Affiliate, and Overall High Score Awards. Watch the Freestyle class and stay for the presentation of the Junior, Amateur and Open winners! *Sponsored by Whit Acres Farm*



**JLC Veterinary Service**  
**JONATHAN COHEN DVM**

**CALL US AT (512) 595-4093**  
**EQUINE EMERGENCY SERVICE AVAILABLE**

**969 UPPER ELGIN RIVER RD., ELGIN, TX 78621**

## CELEBRATING THE JOURNEY



**October 2–6, 2019**  
**Lazy E Arena**  
**Guthrie, Oklahoma**



# Western Dressage Association Of America

*Proudly Presents*

## The 2019 Western Dressage World Championship Show

### FACILITY

**LAZY E ARENA, GUTHRIE, OK**

- WDAA Horse Lifetime Points and Awards Program Triple Point Show
- Competitor's Parties and Silent Auction
- All Levels of Freestyle Offered
- Four Days of Western Dressage Tests
- One day of Rail Classes (Judge: Brian MacMahon)

### JUDGES

Melissa Creswick, California, "R"  
Joanne Coy, Michigan, "R"  
Susan Lang, Kansas, "R"  
Brian MacMahon, Florida, "R"  
Dolly Hannon, Colorado, "R"

### STEWARDS

Joyce Hamblin Kentucky "R"  
Frances Newsom Texas, "R"

### SHOW STAFF

**SHOW COMMITTEE/WDAA EXECUTIVE BOARD**  
Dini Swanson, WDAA Executive Director  
Vivien Van Buren, Show Coordinator  
Ellen DiBella, Director Emeritus, Hospitality  
Cindy Butler, WDAA President

Group Apprentice Judging Clinician  
Holly Clanahan Hendrix, WDAA Vice  
President, Press Room Coordinator

Thallia Blight, WDAA Secretary  
Sharron Sarchet, WDAA Treasurer  
Mike Corcoran, Ground Crew

Coordinator

Lynn Shinkle

Cliff Swanson

Katharina Nowotny-Boles,

Volunteer Coordinator

Nichole Oster, Sponsorship Coordinator

### SHOW MANAGER CINDY REID

(970) 217-7820 • cindyreid@aol.com

### SHOW SECRETARIES

• **SUSAN PAPE-PEACOCK**

(405) 760-0135 • susan@showsecretary.com

• **JAN COLLEY** • (512) 565-1134

colley256@gmail.com

### LAZY E ARENA

Helen Price (405) 834-5603

USEF Recognized Local Show  
#334526

WDAA Recognition #19-100  
No USEF memberships or horse  
registrations are required

#### EXCEPTION:

Amateur riders must have a USEF  
amateur card or show in the  
Open division.

### WDAA WEBSITE

[www.westerndressageassociation.org](http://www.westerndressageassociation.org)

### SHOW WEBSITE

[www.wdaaworldshow.com](http://www.wdaaworldshow.com)

### ANNOUNCERS

Wendy Stephenson-Smith  
Nancy Eytcheson

### ONSITE FARRIER

Bill Caywood, Guthrie, OK  
(405) 249-2166

### EMT

John Rousch, Moore, OK  
(405) 640-3451

### ON-CALL VETERINARIAN

Dr. Mike Johnston, Edmond, OK  
Equine Medical Associates  
(405) 348-3130

### NEAREST EQUINE SURGICAL FACILITY & ISOLATION CAPABILITIES

Oakridge Equine, Edmond, OK  
(405) 359-5002

### WORLD SHOW VIDEOGRAPHER AND EXCLUSIVE VIDEO PARTNER

Total Horse Channel  
[www.totalhorsechannel.com](http://www.totalhorsechannel.com)

### WORLD SHOW PHOTOGRAPHER

Don Stine Equine Sports Photography  
[dstine@donstine.com](mailto:dstine@donstine.com) • (832) 289-2250

### SHOW PROGRAM/GRAPHIC DESIGN

Jana Thomason • (405) 227-4449  
JT Creative Design & Photography LLC  
Impressions Printing • (405) 524-2800

### HORSE SHOW OFFICE

*(Located just inside the west doors of the  
Indoor Arena)*

October 1-6 • 8am-1 hour after show

### WDAA OFFICE

*(located at the end of the covered arena)*  
October 1-6 • 8am-1 hour after show


### TENTATIVE STALLING OFFICE HOURS

Monday: Noon to 9 pm

Tues, Wed, Thurs: 7 am-9 pm

Fri, Sat 9 am-5 pm

Sun: On-call only



**Brandie Haining**  
The Circle B Riding Academy  
Horse Back Riding

Beginner to Intermediate  
Western & English  
Western Dressage

Located in  
Norco, CA 92860  
Mobile : 562.773.8686



**Hoof 'N Paw Chiropractic**  
[www.hoofnpawchiro.com](http://www.hoofnpawchiro.com)  
 Like us on FB: Hoof N Paw  
 Austin, TX  
**Angela Stephens D.C.**  
 Chiropractor  
[abstephens26@gmail.com](mailto:abstephens26@gmail.com)  
 319-350-9665



**Nes Gutierrez APF-I**  
 Central Texas Farrier Service  
 (972) 841-3345  
[andres@hghorseshoeing.com](mailto:andres@hghorseshoeing.com)  
[www.hghorseshoeing.com](http://www.hghorseshoeing.com)

No hoof no horse! Save money on hoof supplements.  
 Use code **19476** for 5% discount and free shipping.  
[www.americanfarriers.org/supplement](http://www.americanfarriers.org/supplement)



## Relational Riding Academy

Study WD with

**Michelle Binder-Zolezzi**



Visit us in the barn  
 while we're here at  
 the Lazy E

**Are you curious about RRA  
 Intensive Trainings?**

*Come and stay with us & ride World  
 Champions in a unique learning format*



**Host a WD Clinic or Seminar**

*Michelle is an experienced clinician, ARIA certified instructor  
 and World Champion Coach.*

[www.RelationalRidingAcademy.com](http://www.RelationalRidingAcademy.com) 509.290.4301  
[bmkb65@hotmail.com](mailto:bmkb65@hotmail.com)

## WDAA State Affiliates

Affiliates are the educational partners for a geographical area and provide great value to WDAA and to individuals seeking to participate in western dressage. There are currently 11 WDAA state affiliates: Alabama, Arizona, California, Colorado, Florida, Illinois, Massachusetts, Michigan, North Carolina, Oklahoma, Texas, Wisconsin. We encourage everyone to visit the affiliate page: [www.westerndressageassociation.org/wdaa-state-affiliates/](http://www.westerndressageassociation.org/wdaa-state-affiliates/), which is linked on the WDAA home page and provides affiliate website and Facebook links. Although each WDAA affiliate can be incorporated in only one state, neighboring states that may not have enough resources to start their own affiliate can consider bringing members from your state to

join a nearby state affiliate. This has become a very successful way to extend western dressage camaraderie, experience, clinics, and shows to several different areas of the country. WDAA now has a State Affiliate Council in place. The Council comprises at least one member from each state affiliate, a staff member, and WDAA board member Lynn Shinkle. We all work as a team to assist in affiliates' promotional efforts, answer questions, exchange ideas, and any other way that provides guidance or assistance. Anyone interested in starting a state affiliate should contact WDAA at [info@westerndressageassociation.org](mailto:info@westerndressageassociation.org).







Oklahoma Dressage Society (ODS) is a Group Membership Organization (GMO) of the United States Dressage Federation. Our mission is to promote and support the sport and art of dressage to the equestrian community for the purpose of fostering individual and collective growth by providing leadership, education, exhibitions, publications, competitions, and to enhance greater public awareness, understanding, and appreciation for the discipline of dressage.

### Oklahoma Dressage Society offers:

- Education in the form of clinics, recognized shows, schooling shows and educational events for it's members
- Recognition of rider achievements through Year End Award Program
- Monthly newsletter, email blasts, Facebook page
- ODS also encompasses 3 Chapters offering local activities in the Tulsa, Oklahoma City, and Ponca City areas:

Visit our website [www.dressageoklahoma.org](http://www.dressageoklahoma.org) for a complete calendar of events, membership information, blog postings, newsletters and more.

*Lynn & Cyril Proudly Promote* **WESTERN DRESSAGE**  
– Past, and Future  
**CHAMPIONS!**  
• Clinics • Competitions • Coaching

**Congratulations!**  
**JULIE CAINE**  
2018 OVERALL HIGH SCORE  
WDAA WORLD SHOW

**PALM**  
EQUESTRIAN  
ACADEMY™  
– SINCE 1970 –  
**CELEBRATING**  
**50**  
2020  
**YEARS**  
of Training  
**SUCCESS!**  
OCALA • SARASOTA • BESSEMER

**Lynn Palm – 7 OPEN WORLD CHAMPIONSHIPS**

**LYNNPALM.COM 352-629-3310**

Be The Rider Your Horse Deserves!™





**Show Manager  
Cindy Reid**

Welcome to the 7th Annual Western Dressage World Championship Show. Here, for our fourth year at the Lazy E Ranch, we have a record number of entries. With an expanded show and lots of special activities planned, this will be a great week of top notch Western Dressage rides, showcasing many different breeds. We look forward to catching up with old friends and making new ones. We're glad you're here!"

*—Cindy Reid*



**CELEBRATING THE JOURNEY**



## Horse Lifetime Points & Awards Program

The WDAA Horse Lifetime Points & Awards Program tracks points achieved by a horse throughout their Western Dressage career.

Points must be earned at WDAA recognized shows (find shows on WDAA website)

Open to all horses, ponies, and mules regardless of breed, type, age, etc.

Points may be earned with more than one rider.

Owners and persons participating and/or riding a horse in the program must be current WDAA members in good standing.

Points awarded at all WD levels and Freestyle tests, as well as for Rail Classes, including Suitability, Hack, and Equitation.

WDAA World Show test/class submissions earn triple points.

### AWARDS FOR POINTS EARNED IN WDAA RECOGNIZED SHOWS

WDAA Register Of Merit, 35 pts

WDAA Register Of Achievement, 100 pts

WDAA Register Of Excellence, 200 pts

WDAA Bronze Medalist, 300 pts with at least 5 tests Level 1 or higher

WDAA Silver Medalist, 400 pts with at least 5 tests Level 2 or higher

WDAA Gold Medalist, 500 pts with at least 5 tests Level 3 or higher

WDAA Supreme Champion, 700 pts with at least 5 tests Level 4 or higher

### PROGRAM & SHOW RECOGNITION FEES

- Horse Enrollment Fee: \$100
- Annual Recording Fee: \$50
- Test or Rail Class Fee: \$10/test or rail class

For more information, contact

[info@westerndressageassociation.org](mailto:info@westerndressageassociation.org)

[Kathy@westerndressageassociation.org](mailto:Kathy@westerndressageassociation.org) or visit  
[www.westerndressageassociation.org](http://www.westerndressageassociation.org)



# Thank You!

## BREED HIGH SCORE SPONSORS

**AMERICAN** Saddlebred: American Saddlebred Versatility Assn - VERSA  
**MUSTANG:** Operation Wild Horse  
**ANDALUSIAN/ANDALUSIAN CROSS:** Hy-Horse Haling Euine Empath  
**CONNEMARA/CONNEMARA CROSS:** Celtic Cross Equestrian Center  
**NATIONAL SPORT PONY:** Relational Riding Academy  
**APPALOOSA:** K&M Pferdehof  
**NATIONAL SHOW HORSE:** American Saddlebred Versatility Assn VERSA  
**AMERICAN QUARTER HORSE:** AQHA  
**PAINT:** Phyllis Oates  
**QUARTER PONY:** Relatively Stable Farm  
**PINTO:** Pinto Horse Association  
**ARABIAN/ARABIAN CROSS:** Arabian Horse Association  
**POA:** ML Dodd MD, Psychiatric Associates Inc.  
**FJORD:** Relational Riding Academy  
**RESCUE:** Twin Creek Stables, LLC  
**FRIESAN/FRIESAN CROSS:** International Friesian Horse Show Assn  
**GRADE/UNKNOWN:** Heart of Texas Equestrian  
**DRAFT HORSE/SHIRE, PERCHERON, BELGIAN CROSS:** Lindsay Buck & Eliot Meikle  
**GYPSY:** Gypsy Vanner Horse Society  
**THOROUGHBRED:** Wild Wine Farm  
**TENNESSEE WALKER:** Tennessee Walking Horse Breeders And Exhibitors Assn  
**MISSOURI FOX TROTTER:** Missouri Fox Trotting Horse Breed Assn.  
**WARMBLOOD:** American Warmblood Society and Sport Horse Registry  
**MORGAN:** American Morgan Horse Association, Inc.  
**WELSH/WELSH CROSS:** Welsh Pony & Cob Enthusiasts  
**MULE/DONKEY:** The Hook Family (Toccoa, GA)

## SPECIAL AWARD SPONSORS

**SILVER SPUR AWARD:**  
 In Memory of WDAA #139 Minnie Passer aka Diva  
**VETERANS HIGH SCORE AWARD BUCKLE:** Sponsored by Tori Blankenship,  
 Western Dressage Riding Gear  
**GREEN HORN AWARD:** Wallace & Tamra Steinbrecher  
**PHYSICALLY CHALLENGED/HEROES ON HORSES (EXCEPTIONAL RIDER BUCKLE):**  
 Equinox Farm, LLC

## DIVISION BUCKLE SPONSORS

### INTRODUCTORY LEVEL

Benchmark Construction  
 Leveroni Family Foundation  
 Heart of Texas Equestrian

### BASIC LEVEL

Shady Oaks Stables  
 LongShot Farm  
 Cathy Drumm/Kindful Training

### LOWER LEVEL GAITED

Tennessee Walking Horse Breeders And Exhibitors Assn  
 Clients of MacGregor Stables

### LEVEL 1

DVM, Black Pond Veterinary Service  
 Palm Equestrian Academy  
 Jenna Brumm Horsemanship

### LEVEL 2

Cowgirl Cinches  
 Cindy & Andy Butler  
 Jay & Julie Cain

### LEVEL 3

Tim & Kevin Christensen/Christensen Performance Horses.  
 Brothers & Arms  
 Sport of Horses Park

### LEVEL 4

Weaver Leather  
 American Warmblood Society and Sport Horse Registry

### UPPER LEVEL GAITED

TWH Dressage on Facebook



## Golf Cart Rules of the Road at the WDAA World Championship Show

1. DO NOT drive a golf cart on the pony path or on the land bridge. Please use the paved street. This is for the safety of our horses and mounted friends.
2. Speed limit is 5 mph in the barn and parking areas. 10 mph on the paved driveway.
3. You must be 16 years old with a valid driver's license to operate a golf cart. No exceptions. This is a USEF rule.
4. Golf carts are allowed to park in the paved and striped parking lots. Please no parking on sidewalks or in fire lanes
5. Never tie a horse to a golf cart or lead a horse from a golf cart.
6. Whether on the street, in the barn area or the parking areas, horses have the right of way!

## Show Committee & Executive Board



**Cindy Butler**  
PRESIDENT

I am proud to serve the members of WDAA as President and I am proud of the WDAA members. Our members are some of the best people in the World and while our love for horses and our Western heritage brings us together, our dedication to humane treatment and honoring the horse and each other is what really makes us a family. We may be at different levels with different challenges, but we're all on the same road.

It is my promise to protect the integrity of our discipline with all that I am and to serve WDAA members to the best of my ability. As WDAA grows, we plan to continue our focus on education and providing excellent customer service to our members. The best part is that we do it together with respect for all.



**Holly Clanahan**  
VICE PRESIDENT

To me, Western Dressage is the perfect blend of traditions and ethics. I love being able to throw on my boots and jeans and a Wade saddle and work on classical techniques in a way that respects my horse's limitations and builds on her talents. I also love being on this journey with like-minded people, who above all else, are about honoring the horse, no matter the breed, no matter their diverse backgrounds. It's a discipline that brings people together.



**Thallia Blight**  
SECRETARY

Thallia Blight has been an active spokesperson for Western Dressage, giving presentations to college clubs, 4-H advisor workshops, and equestrian organizations. As a self-described "non-athlete" she is proud that our sport is open to people and horses of different backgrounds, ages, and skill levels.

Thallia has loved horses ever since she could say "pony." She discovered dressage in college. Clinics in 2013 at the Equine Affaire with Cliff Swanson and the Train the Trainers program with Frances Carbonnel, prepared her to compete in the WDAA World Show with her equine partner, Finest Five, a Paint mare. Together they have won three World Championships at Basic Level. Finest Five earned her WDAA ROM at age 29 and has been inducted into the Dressage Foundation's Century Club (with friend Carol Pizor).



**Sharron Sarchet**  
TREASURER

What drew me to Western Dressage was that the horses were happy in their work. I love the emphasis on harmony and cooperation between horse and rider. The fact that the people are warm and wonderful just makes the journey better!





## Lynn Shinkle

My journey began April 29, 2008 with the birth of Bella, my home-bred part Arabian. She is now my partner, from riding down the center line, to riding the beautiful beaches of Northeast Florida. On my journey I have learned to ride—really ride! I've been a horsewoman for most of my life, but with the birth of WDAA and Bella, my knowledge is now much deeper ... I understand how horses move and how to move with her, not against her. This journey had introduced me to wonderful organizations that promote the horse in the form of GMO's, show organizers, and local clubs, but most of all, it's about people...horse people ... fun people ... we enjoy talking, learning, seeing and sharing Western Dressage! So here's to the journey ... may I be granted the wisdom to take time and appreciate all it has to offer!



## Ellen DiBella DIRECTOR EMERITUS

I've shown Morgan horses in Western Pleasure for many years and watched the judging change and not always for the better. Many of my horses got very bored with the round and round of rail classes, and as I look back, every one of those horses would have loved Western Dressage! I've been fortunate, recently, to have several participate in Western Dressage. The ability to progress at your own rate in building a partnership with your horse, along with the feedback from scores on each movement and judge's remarks, is just wonderful. Western Dressage opens a new world of possibilities to horses and riders. It is a great journey with wonderful company.



## Mike Corcoran MASTER SADDLER FOR 30 YEARS/WD EXHIBITOR & INSTRUCTOR/PRESIDENT OF THE WESTERN DRESSAGE ASSOCIATION OF OKLAHOMA



## Cliff Swanson WDAA JUDGES' EDUCATION CLINICIAN & TRAIN THE TRAINERS CLINICIAN

### Heart of Texas Equestrian

Join the Journey

**Catherine Campbell**  
Owner and Trainer

Western Dressage - Classical Dressage  
Boarding - Lessons - Training

512-567-1469

TexasWesternDressage@gmail.com

www.texaswesterndressage.com



### CW EQUESTRIAN CENTER, INC.

*Educated Equine Excellence!*



www.cwequestriancenter.com  
E-mail: ddoll@CWEquestrianCenter.com

FULL SERVICE PREMIERE BOARDING FACILITY  
...  
RIDING ACADEMY STYLE INSTRUCTION  
RIDING INSTRUCTOR: CRYSTAL M. WELSH, M.S.

11607 State Route 177  
Mascoutah, IL 62258  
Crystal: 618.960.7772  
Dianne: 618.910.7946

PROUD TO SPONSOR THE  
**2019 WDAA WORLD SHOW!**



**W**elcome to the fabulous Lazy E Arena, located just southeast of Guthrie and northeast of Edmond and Oklahoma City. Founded in 1984, the arena has a rich history of hosting world championships, world class competitors and spectators from across the globe.

**I**t is an honor and a privilege to host the 2019 Western Dressage World Championship Show. We know that each contestant has worked hard to join us here for this event and it is our promise to provide a fun and relaxing environment. During the week, contestants will be working hard to pursue a world championship title and we will be working to provide a memorable experience to remember for years to come!



Visit us at [www.lazye.com](http://www.lazye.com)

405-282-3004





# **-Facility Information-**

## **Concessions**

**Location:** West Concourse of the main arena to the right of the main entrance.

**Hours:** Wednesday - 8am to 2pm

**Thursday-Sunday - 7am to 2pm**

## **The Cantina**

**Host for all WDAA Hospitality Events**

**Location:** 3rd floor of the main arena (elevator located behind ring 2)

**Hours:** Tuesday: 10am to end of competition

**Wednesday: 2pm to 6pm**

**Thursday - Sunday: 10am to end of competition**

## **The E Store**

**Location:** Southwest corner of the main arena

**Store Hours:** Friday-Saturday 10am to 5pm

## **Deb's Coffee Cart**

**Open at Reliance seating area**

## **Stall Office Hours**

**Sunday - 1pm to 8pm**

**Monday - 9am to 10pm**

**Tuesday through Thursday - 7am to 9pm**

**Friday through Saturday - 9am to 6pm**

**Sunday, on call - see the stall office window for the phone number**



## Meet the Judges



**Melissa Creswick**  
**CALIFORNIA "R"**

Melissa Creswick is a "S" dressage judge, a "R" sport horse and a "R" Western Dressage USEF judge in addition to being an AQHA dressage division Judge. Bronze, Silver and Gold medalist USDF.

Melissa is actively evolved in both USDF and California Dressage Society as committee and a board member. In the past she has been President of California Dressage Society and Vice President of USDF as well as a past member of the USEF Dressage Committee.

Melissa has an active clinic schedule in the US including California Dressage Society Amateur series. In her college days she was a wrangler at a cattle ranch in Steamboat Springs Colorado.



**Brian MacMahon**  
**FLORIDA "R"**

Brian MacMahon "R" Dressage/Western Dressage judge USEF

Bachelor of Science in Chemistry, Masters of Business Administration, University of Miami. Bronze, Silver and Gold medalist USDF.

Brian owns and operates a Dressage training center in Wellborn Florida with his partner Eugene Abello. He coaches and conducts clinics throughout the south east and has students competing successfully from training level through the Grand Prix.

Brian has worked in the sport of dressage for over 35 years and enjoys training, coaching and judging as that gives him a fuller perspective of the sport as he continues to learn and share that knowledge.



**Joanne Coy**  
**MICHIGAN "R"**

Joanne Coy is a life-long student of the horse, with a varied background in all things horse. She is a USDF Bronze Medalist, L Graduate, and USEF Western Dressage "R" judge.

Joanne co-taught the WDAA Judge Apprentice Program in 2017 and 2018, and assisted at the 2019 WDAA Judge Seminar. Her horse endeavors include endurance and competitive trail riding, harness racing, competitive mounted orienteering, Western and English pleasure, horsemanship and trick training, English and Western Dressage, trail riding and camping with her horses.

Joanne continues to show in English and Western dressage. She strongly believes that through the correct training that Western Dressage offers, the rider helps to shape the horse's mind and body so it can live a long, comfortable and useful life.



**Susan Lang**  
**KANSAS "R"**

Susan Lang of Wichita, Kansas is an "R" Western dressage judge, a, USDF L-Graduate, and a USEF "R" dressage technical delegate.

Susan has judged WDAA World in the past, as well as Western dressage at Morgan Grand Nationals. She showed her 22-year-old Dutch warmblood through Fourth Level, and then changed him to Western Dressage. In the past year, she has shown him in Level 1 Western Dressage. and if his health continues to allow it, they will show Level 2 or Level 3 next year.

Susan has also attended the Train the Trainer seminar in 2019 in Las Vegas, Nevada and is the current President of the Kansas Dressage and Eventing Association.



**Dolly Hannon**  
**COLORADO "R"**

Dolly Hannon is a USEF "S" Dressage judge, USEF "R" Western Dressage judge and is on WDAA faculty.

Dolly graduated CSU with a minor in animal science and a teaching certificate in Western riding from CSU. She has taught the WDAA judges forums and group apprentice programs and is currently chair of the USDF

Freestyle Committee. Dolly is on the USDF faculty for the USDF instructors certification program, and she contributed to the writing of the current WDAA tests.

Dolly enjoys riding Western and feels that Western Dressage is the perfect fit for many people and their horses. She loves the inclusiveness of all breeds and the emphasis on harmony.

Dolly resides in Golden, Colorado and works at Legacy Valley Farm, in Arvada, CO.



## Meet Your Stewards

**Joyce Hamblin** is an accomplished horsewoman who has focused on Saddlebred horses. As a C2USEF Steward, Joyce is often “in the field” dealing with real world issues at horse shows for a variety of breeds and disciplines. Her formal training is as a microbiologist. Joyce is highly involved with western dressage. In fact, she



served as as the USEF liaison for the discipline during its initial years; this included communication and support between USEF, WDAA, technical committees and competitors. Joyce has previously served as the steward for the WDAA World Show.

**Francie Newsom** is delighted to return to the Western Dressage World Championship Show, having stewarding this show several times before. She has been a C2 USEF Steward for 17 years.



Also for 17 years, she has worked for Space Center Houston, and is currently a Mission Briefing Officer and the Lunch With an Astronaut Coordinator. She lives in Alvin, TX with her husband Steve, and doggies Lucy and Buddy.

“I am looking forward to catching up with old friends, and making new ones. Western Dressage is a fabulous way to showcase the bond and understanding between horse and rider. A prize is not the goal—progress in communication and partnership is what it’s all about.”

## 2018 Overall High Point Division Champions



**Junior Rider High Point**  
**Korbin Eckert on Paddys Irish Starlet**  
**79.524%**

Korbin Eckert is 15 years old and lives in Spokane, Washington. He has been riding and training at Relational Riding academy for 2 years with trainer Michelle Binder-Zolezzi. One of the things Korbin likes best about riding there is the emphasis on building a strong relationship between horse and rider.

Last year he competed on an 18-year-old Quarter Horse mare named Paddys Irish Starlet, known as “Scarlet” in the barn. In his first year of showing, they had great success winning numerous high points, national champion, and world champion in all three tests at WDAA World Championships and world champion division award as well as Overall High Score award.

He also showed a second horse, Spindoll and competed in the same class winning reserve champion in two tests.

He’s really looking forward the 2019 World Championship and being able to have fun and see so many great riders and horses!



**Amateur Rider High Point**  
**Julie Cain on Larks Best Bett 83%**  
Larks Best Bett “Betty” is a 16-year-old Appendix Quarter Horse mare. She is a homebred mare; raised, trained, proudly shown and loved by Jay and Julie Cain from Stillwater, Minnesota.

Julie and Betty further their skills through clinics, lessons and coaching primarily with Palm Equestrian Academy. The 2018 World Show was highlighted with two World Championships, one Reserve World Championship, two Division Titles for Intro Level Amateur and Basic Level Amateur as well as the extremely memorable high score award.

We wish the best of luck to all Western Dressage competitors, enjoy the journey!



**Open Rider High Point**  
**Laurie Hedlund on Lyka 80.8%**

Lyka (aka “The Princess”) is an 11-year-old Q.H. X, owned by Kelly and Jim Fisher of Pryor, OK and shown by Laurie Hedlund of Claremore, OK.

Lyka enjoys most of her time with her owner Kelly working on obstacles, ranch riding and going on long trail rides.

Laurie has a Classical Dressage background and is a WDAA Train the Trainers Graduate. She sits on WDAA Oklahoma Chapter/advisory committee and is working on her WDAA Judges card. Lyka and Laurie have participated in clinics with Buck Brannaman and other nationally known clinicians.

In 2018 Lyka was High Score of the Open Division, High Score/Champion in her Division, High Score/Champion of her Class and High Score for her Breed.

Her owner credits Lyka’s Dressage training foundation for her overall success, not only in the show ring, but in the other disciplines in which she participates.

We just adore this sassy little mare and we are looking forward to our journey and where it leads our “Princess.”

## PAST CHAMPIONS & WINNERS

### 2018 OVERALL SHOW HIGH POINTS

#### JUNIOR

|            |               |                      |
|------------|---------------|----------------------|
| HIGH POINT | Korbin Eckert | Paddys Irish Starlet |
| RESERVE HP | Korbin Eckert | Spindoll             |

#### AMATEUR

|            |            |                 |
|------------|------------|-----------------|
| HIGH POINT | Julie Cain | Larks Best Bett |
| RESERVE HP | Jay Cain   | Happyhoursat3   |

#### OPEN

|            |                 |              |
|------------|-----------------|--------------|
| HIGH POINT | Laurie Hedlund  | Lyka         |
| RESERVE HP | Tim Christensen | Shari Gemini |

### 2018 DIVISION AWARDS

#### INTRODUCTORY LEVEL

##### JUNIOR

|          |                      |               |
|----------|----------------------|---------------|
| CHAMPION | Paddys Irish Starlet | Korbin Eckert |
|----------|----------------------|---------------|

##### AMATEUR

|          |                 |            |
|----------|-----------------|------------|
| CHAMPION | Larks Best Bett | Julie Cain |
|----------|-----------------|------------|

##### OPEN

|          |                  |              |
|----------|------------------|--------------|
| CHAMPION | Sunbeach Playboy | Julie Haugen |
|----------|------------------|--------------|

#### INTRODUCTORY/BASIC GAITED

##### AMATEUR/JUNIOR

|          |              |                   |
|----------|--------------|-------------------|
| CHAMPION | Money of Joy | Sarah-Beth Arnold |
|----------|--------------|-------------------|

##### OPEN

|          |                  |                |
|----------|------------------|----------------|
| CHAMPION | Banner Headlines | Scot MacGregor |
|----------|------------------|----------------|

#### BASIC

##### JUNIOR

|          |                |              |
|----------|----------------|--------------|
| CHAMPION | Simone Deville | Grace Noelke |
|----------|----------------|--------------|

##### AMATEUR

|          |                 |            |
|----------|-----------------|------------|
| CHAMPION | Larks Best Bett | Julie Cain |
|----------|-----------------|------------|

##### OPEN

|          |      |                |
|----------|------|----------------|
| CHAMPION | Lyka | Laurie Hedlund |
|----------|------|----------------|

#### LEVEL 1

##### JUNIOR

|          |                |              |
|----------|----------------|--------------|
| CHAMPION | Simone Deville | Grace Noelke |
|----------|----------------|--------------|

##### AMATEUR

|          |               |               |
|----------|---------------|---------------|
| CHAMPION | Dark Chocolit | Krista Nobilo |
|----------|---------------|---------------|

##### OPEN

|          |                    |              |
|----------|--------------------|--------------|
| CHAMPION | WCS Holiday Falona | Sara Breyman |
|----------|--------------------|--------------|

#### LEVEL 2

##### AMATEUR

|          |               |                |
|----------|---------------|----------------|
| CHAMPION | Bonita Lights | Glynis Walford |
|----------|---------------|----------------|

##### OPEN

|          |                |                    |
|----------|----------------|--------------------|
| CHAMPION | Simone Deville | Stacey McAlexander |
|----------|----------------|--------------------|

#### LEVEL 3

##### AMATEUR

|          |                  |                |
|----------|------------------|----------------|
| CHAMPION | Smokin White Gun | Joanne Haughan |
|----------|------------------|----------------|

##### OPEN

|          |              |                   |
|----------|--------------|-------------------|
| CHAMPION | Lonsum Sadie | Kristen Whittaker |
|----------|--------------|-------------------|

#### LEVEL 4

##### AMATEUR/JUNIOR

|          |                     |                |
|----------|---------------------|----------------|
| CHAMPION | Haidaseeker Playboy | Andrea Caudill |
|----------|---------------------|----------------|

##### OPEN

|          |                   |              |
|----------|-------------------|--------------|
| CHAMPION | Truly Unsurpassed | Nancy Conley |
|----------|-------------------|--------------|

### GAITED HORSES ALL LEVELS

#### ALL RIDERS

|          |                     |                |
|----------|---------------------|----------------|
| CHAMPION | All Around Midnight | Scot MacGregor |
|----------|---------------------|----------------|

#### THERAPEUTIC RIDER

#### ALL RIDERS

|          |                |               |
|----------|----------------|---------------|
| CHAMPION | Nike Five Time | Evan Saunders |
|----------|----------------|---------------|

### 2017 DIVISION AWARDS

#### INTRODUCTORY LEVEL

##### JUNIOR

|          |          |                   |
|----------|----------|-------------------|
| CHAMPION | Spindoll | Rose Ruotsalainen |
|----------|----------|-------------------|

|         |                |                |
|---------|----------------|----------------|
| RESERVE | Hug Me Hot Rod | Melissa Cruzan |
|---------|----------------|----------------|

##### AMATEUR

|          |               |          |
|----------|---------------|----------|
| CHAMPION | Happyhoursat3 | Jay Cain |
|----------|---------------|----------|

|         |             |                 |
|---------|-------------|-----------------|
| RESERVE | Sarah Pryor | DS Prairie Fire |
|---------|-------------|-----------------|

##### OPEN

|          |       |              |
|----------|-------|--------------|
| CHAMPION | Faith | Robert Hayes |
|----------|-------|--------------|

|         |                     |             |
|---------|---------------------|-------------|
| RESERVE | Dudes Country Starr | Phyllis Ray |
|---------|---------------------|-------------|

#### BASIC LEVEL

##### JUNIOR

|          |                  |                 |
|----------|------------------|-----------------|
| CHAMPION | It's Only Butter | Logan DeCoursey |
|----------|------------------|-----------------|

|         |                   |                |
|---------|-------------------|----------------|
| RESERVE | Peppers Temptress | Haley Wittaker |
|---------|-------------------|----------------|

##### AMATEUR

|          |               |                |
|----------|---------------|----------------|
| CHAMPION | Bonita Lights | Glynis Walford |
|----------|---------------|----------------|

|         |                 |             |
|---------|-----------------|-------------|
| RESERVE | DS Prairie Fire | Sarah Pryor |
|---------|-----------------|-------------|

##### OPEN

|          |            |                 |
|----------|------------|-----------------|
| CHAMPION | Luna Nueva | Brandie Haining |
|----------|------------|-----------------|

|         |            |               |
|---------|------------|---------------|
| RESERVE | WC Dealina | Marilyn Weber |
|---------|------------|---------------|

#### LEVEL 1

##### JUNIOR

|          |               |                 |
|----------|---------------|-----------------|
| CHAMPION | Chocolualatte | Cassidy Shepard |
|----------|---------------|-----------------|

|         |                |              |
|---------|----------------|--------------|
| RESERVE | Simone Deville | Grace Noelke |
|---------|----------------|--------------|

##### AMATEUR

|          |                  |                  |
|----------|------------------|------------------|
| CHAMPION | Baron's Dynamite | Dana Pantono DVM |
|----------|------------------|------------------|

|         |            |                |
|---------|------------|----------------|
| RESERVE | Cloud Nine | Lisa Hannaford |
|---------|------------|----------------|

##### OPEN

|          |            |                 |
|----------|------------|-----------------|
| CHAMPION | Luna Nueva | Brandie Haining |
|----------|------------|-----------------|

|         |                       |               |
|---------|-----------------------|---------------|
| RESERVE | Shenanigans Too +++// | Marilyn Weber |
|---------|-----------------------|---------------|

#### LEVEL 2

##### JUNIOR/AMATEUR

|          |                        |                 |
|----------|------------------------|-----------------|
| CHAMPION | I'll Be a Scarlet Moon | Cynthia Collins |
|----------|------------------------|-----------------|

|         |            |                |
|---------|------------|----------------|
| RESERVE | Cloud Nine | Lisa Hannaford |
|---------|------------|----------------|

##### OPEN

|          |                   |                |
|----------|-------------------|----------------|
| CHAMPION | Gallod Ffantastic | Joann Williams |
|----------|-------------------|----------------|

|         |                   |              |
|---------|-------------------|--------------|
| RESERVE | Truly Unsurpassed | Nancy Conley |
|---------|-------------------|--------------|

#### LEVEL 3

##### JUNIOR/AMATEUR

|          |                        |                 |
|----------|------------------------|-----------------|
| CHAMPION | I'll Be a Scarlet Moon | Cynthia Collins |
|----------|------------------------|-----------------|

|         |          |               |
|---------|----------|---------------|
| RESERVE | Tecolate | Jane Ann Lake |
|---------|----------|---------------|

### GAITED HORSES ALL LEVELS

#### ALL RIDERS

|          |                     |              |
|----------|---------------------|--------------|
| CHAMPION | Classic Royal Pride | Julie Haugen |
|----------|---------------------|--------------|

|         |              |                  |
|---------|--------------|------------------|
| RESERVE | Money of Joy | Sara-Beth Arnold |
|---------|--------------|------------------|



## PHYSICALLY CHALLENGED/HEROES ON HORSES

### ALL RIDERS

|          |               |                   |
|----------|---------------|-------------------|
| CHAMPION | Mostly A Rose | Shawn Makepeace   |
| RESERVE  | Smart Zone    | Jennifer Flanagan |

## 2016 DIVISION AWARDS

### INTRODUCTORY LEVEL

#### JUNIOR

|          |                       |                 |
|----------|-----------------------|-----------------|
| CHAMPION | Pepto's Royal Soldier | Hanna Michalsen |
| RESERVE  | Brook Side Leo        | Aaliyah Speert  |

#### AMATEUR

|          |                  |                   |
|----------|------------------|-------------------|
| CHAMPION | KB's Timepiece   | Cindy Rau-Sobotka |
| RESERVE  | All Time Glitter | Marie Broberg     |

#### OPEN

|          |                    |                |
|----------|--------------------|----------------|
| CHAMPION | Meagan/Kelly Adams |                |
| RESERVE  | Moon's Black Label | Rachel Freeman |

### BASIC LEVEL

#### JUNIOR

|          |                   |                 |
|----------|-------------------|-----------------|
| CHAMPION | Hug Me Hot Rod    | Melissa Cruzan  |
| RESERVE  | Chip N At Midnite | Jacklyn Hegberg |

#### AMATEUR

|          |                  |                           |
|----------|------------------|---------------------------|
| CHAMPION | Dun Up Pretty    | Jennifer McClelland-Kiser |
| RESERVE  | All Time Glitter | Marie Broberg             |

#### OPEN

|          |                     |                 |
|----------|---------------------|-----------------|
| CHAMPION | ASR Fadis Willie +  | Marilyn Weber   |
| RESERVE  | VP Keys to My Karma | Tim Christensen |

### LEVEL 1

#### JUNIOR

|          |                   |                 |
|----------|-------------------|-----------------|
| CHAMPION | Chip N At Midnite | Jacklyn Hegberg |
| RESERVE  | Milltoe           | Victoria Gibson |

#### AMATEUR

|          |                       |               |
|----------|-----------------------|---------------|
| CHAMPION | WSG Mystic Expression | Nicki Smith   |
| RESERVE  | Three Fates Cheiron   | Lori Sargeant |

#### OPEN

|          |                           |                 |
|----------|---------------------------|-----------------|
| CHAMPION | Dressed for Paradise      | Michael Marquez |
| RESERVE  | Cobblestone Dash for Gold | Aaron Brown     |

### LEVEL 2

#### JUNIOR/AMATEUR

|          |                       |              |
|----------|-----------------------|--------------|
| CHAMPION | Webster LMP           | Peggy Keller |
| RESERVE  | Canabar Kokopelli GCH | Mai Wisdom   |

#### OPEN

|          |                   |                |
|----------|-------------------|----------------|
| CHAMPION | Gallod Ffantastic | Joann Williams |
| RESERVE  | Hotrodder Mike    | Kelly Adams    |

### LEVEL 3

#### JUNIOR/AMATEUR

|          |                  |                 |
|----------|------------------|-----------------|
| CHAMPION | Tecolote         | Jane Ann Lake   |
| RESERVE  | Tango Del Diablo | Sharon Crawford |

#### OPEN

|          |                   |                 |
|----------|-------------------|-----------------|
| CHAMPION | Gallod Ffantastic | Joann Williams  |
| RESERVE  | Sabreena Sue CHRf | Suzanne Morisse |

## PHYSICALLY CHALLENGED/HEROES ON HORSES

|            |                          |                   |
|------------|--------------------------|-------------------|
| ALL RIDERS | Doc's Hardy Ruby "Jimmy" | Jennifer Flanagan |
|------------|--------------------------|-------------------|

## OVERALL SHOW HIGH POINTS (SINGLE RIDE)

|         |                    |                           |
|---------|--------------------|---------------------------|
| JUNIOR  | Hug Me Hotrod      | Melissa Cruzan            |
| AMATEUR | Dun Up Pretty      | Jennifer McClelland-Kiser |
| OPEN    | ASR Fadis Willie + | Marilyn Weber             |

## 2015 DIVISION AWARDS

### INTRODUCTORY LEVEL

#### OPEN

|          |                     |                 |
|----------|---------------------|-----------------|
| CHAMPION | Alias Hollywood     | Don Charest     |
| RESERVE  | VP Keys to My Karma | Tim Christensen |

#### AMATEUR

|          |               |                           |
|----------|---------------|---------------------------|
| CHAMPION | Cowboy        | Diane Allard              |
| RESERVE  | Dun Up Pretty | Jennifer McClelland-Kiser |

#### JUNIOR

|          |                |                 |
|----------|----------------|-----------------|
| CHAMPION | Tru Timepiece  | Brandie Sobotka |
| RESERVE  | Brook Side Leo | Aaliyah Speert  |

### BASIC LEVEL

#### OPEN

|          |                      |                 |
|----------|----------------------|-----------------|
| CHAMPION | Dressed For Paradise | Michael Marquez |
| RESERVE  | VP Keys to My Karma  | Tim Christensen |

#### AMATEUR

|          |                        |                           |
|----------|------------------------|---------------------------|
| CHAMPION | I'll Be a Scarlet Moon | Cynthia Collins           |
| RESERVE  | Dun Up Pretty          | Jennifer McClelland-Kiser |

#### JUNIOR

|          |                |                 |
|----------|----------------|-----------------|
| CHAMPION | Brook Side Leo | Aaliyah Speert  |
| RESERVE  | Tru Timepiece  | Brandie Sobotka |

### LEVEL 1

#### OPEN

|          |                      |                 |
|----------|----------------------|-----------------|
| CHAMPION | Dressed For Paradise | Michael Marquez |
| RESERVE  | Azkachina Smoki CH   | Aaron Brown     |

#### AMATEUR

|          |                        |                      |
|----------|------------------------|----------------------|
| CHAMPION | Canabar Kokopelli GCH  | Mai Wisdom           |
| RESERVE  | This Stars From Heaven | Charlinda Schabinger |

#### JUNIOR

|          |                  |                 |
|----------|------------------|-----------------|
| CHAMPION | Apttobe Rowdyote | Hannah Whray    |
| RESERVE  | Chocolualatte    | Cassidy Shepard |

### LEVEL 2

#### OPEN

|          |                |                  |
|----------|----------------|------------------|
| CHAMPION | Larks Home Run | Lynn Palm        |
| RESERVE  | Jovial D       | Colette Sossaman |

#### AMATEUR/JUNIOR

|          |                  |             |
|----------|------------------|-------------|
| CHAMPION | Call Me Listo    | Mandy Blais |
| RESERVE  | Apttobe Rowdyote | Hannah Wray |

### LEVEL 3

#### OPEN

|          |                |                |
|----------|----------------|----------------|
| CHAMPION | Larks Home Run | Lynn Palm      |
| RESERVE  | Liberachi SS   | Walter Mantler |

#### AMATEUR/JUNIOR

|          |                |                 |
|----------|----------------|-----------------|
| CHAMPION | Sexy Superstar | Jennifer Postma |
| RESERVE  | Count The Gold | Lindsey Shepard |

## 2014 DIVISION AWARDS

### INTRODUCTORY LEVEL

#### OPEN

|          |                 |                     |
|----------|-----------------|---------------------|
| CHAMPION | My Royal Legacy | Marie-Frances Davis |
|----------|-----------------|---------------------|

#### AMATEUR

|          |                      |                |
|----------|----------------------|----------------|
| CHAMPION | SWF Treasured Prints | Gwen Hreceniuk |
|----------|----------------------|----------------|

#### JUNIOR

|          |               |                 |
|----------|---------------|-----------------|
| CHAMPION | Tru Timepiece | Brandie Sobotka |
|----------|---------------|-----------------|

CONTINUED.

## 2014 DIVISION AWARDS (CONTINUED)

### BASIC LEVEL

#### OPEN

CHAMPION My Royal Legacy Marie-Frances Davis

#### AMATEUR

CHAMPION Idolized Dotti Regas

#### JUNIOR

CHAMPION Nubar Amigo Shine Campbell Ross

### LEVEL 1

#### OPEN

CHAMPION Jetalito Sunny Step Peggy Riley

#### AMATEUR

CHAMPION Sexy Superstar Jennifer Postma

#### JUNIOR

CHAMPION Clever Move Charlena Sokolov

### LEVEL 2

#### OPEN

CHAMPION Jubilee Banjo Francis Carbonnel

#### AMATEUR

CHAMPION Sexy Superstar Jennifer Postma

### LEVEL 3

#### OPEN

CHAMPION Estaban B Francis Carbonnel

#### AMATEUR

CHAMPION Haidaseeker Playboy Andrea Caudill

## 2013 DIVISION AWARDS

### OPEN BUCKLE

CHAMPION Oshquahs Brio Annie Wiggins

### AMATEUR BUCKLE

CHAMPION Who Whiz Slidin Now Alida Near

### YOUTH AMATEUR BUCKLE

CHAMPION Nubar Amigo Shine Parker Ross

### OVERALL SADDLE WINNER

CHAMPION Oshquahs Brio Annie Wiggins

## TOP HAND AWARD\*\*

Presented to a volunteer, whose contribution to WDAA and its educational mission, was outstanding during the current award year.

- 2014 Neide Cooley
- 2015 Joyce Swanson
- 2016 Debbie Riehl-Rodriguez
- 2017 Ann Marie Avansino
- 2018 Cliff Swanson, Katharina Nowotny-Boles, Kelly Coldiron

## HALL OF CHAMPIONS

A horse who has passed, but has won a World Championship or Reserve World Championship at our WDAA World Championship Show, or an alliance partner's World or National Championship.

- 2014 SONTREE GOLDEN OSCAR/Morgan
- 2015 JBS RAISING THE BAR/Missouri Foxtrotter
- 2017 BLONDASAUROS RUTH/Belgian
- 2018 CANABAR KOKOPELLI/Morgan
- MOUNTAIN ROSE CHARISMA/Appaloosa



BRIAN O'SULLIVAN  
(512) 525-4982 • WWW.OSSSADDLES.COM  
OSS.SADDLESTX@GMAIL.COM

BLUE RIBBON EQUINE MASSAGE & SPORTS REHAB



Denise Britt  
210-313-9404

Austin, Texas  
Blueribbonequinemassage@gmail.com  
www.blueribbonhorses.net

*Equestrian freestyle*

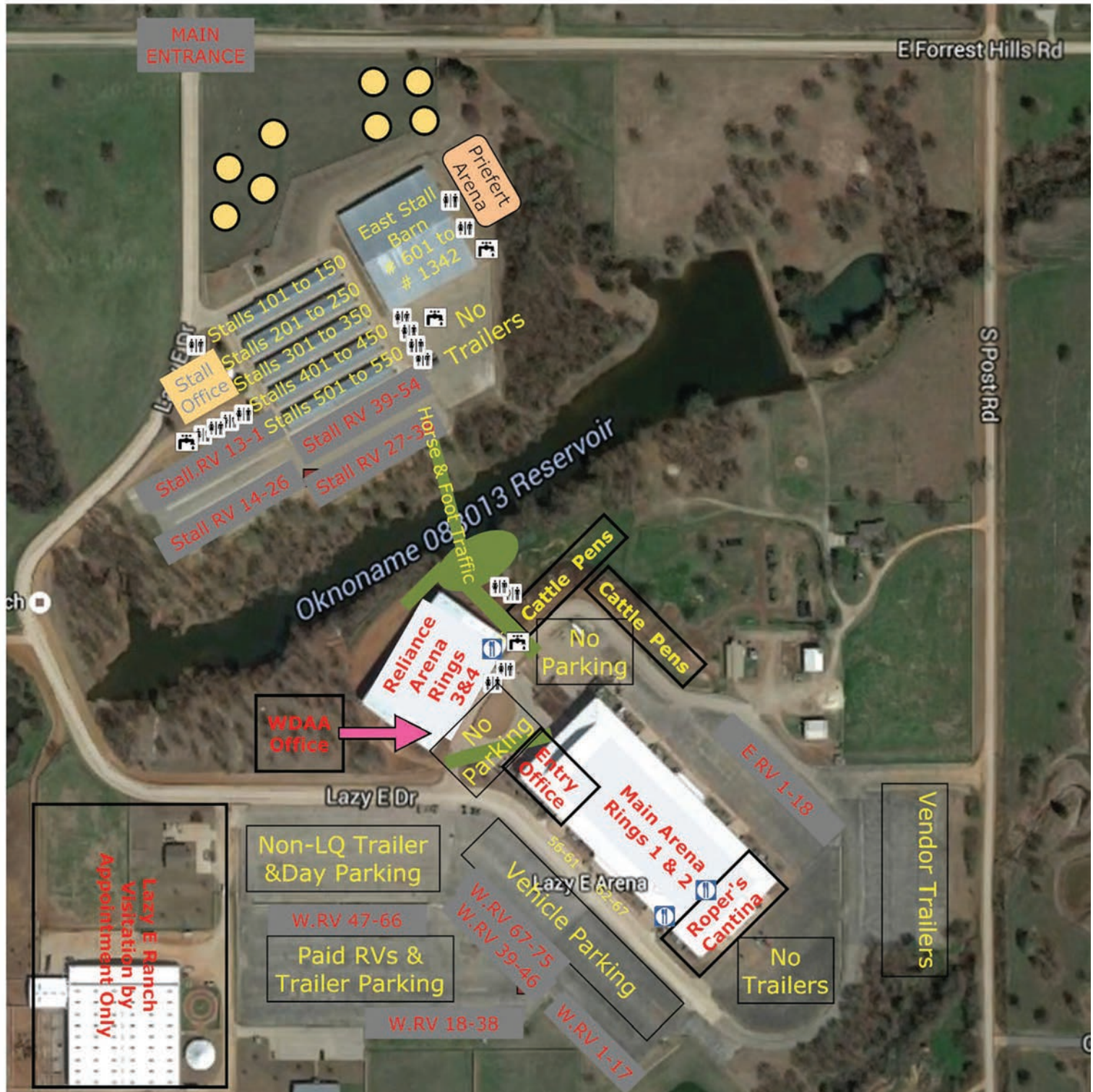


*Passionately* designed by our team.  
*Passionately performed* by yours.

EquestrianFreestyle.com



# Lazy E Arena Site Map



# THE 2019 WESTERN DRESSAGE WORLD CHAMPIONSHIP SHOW

## Western Dressage World Championship Show Horses & Exhibitors

| BACK # | HORSE                       | SEX | HEIGHT | COLOR         | YEAR | BREED                   | RIDER/OWNER   |
|--------|-----------------------------|-----|--------|---------------|------|-------------------------|---|
| 101    | GHOST RIDER                 | G   | 15.1   | PALOMI        | 2015 | MORGAN                  | JOYCE E. SWANSON/JOYCE E. SWANSON                   |
| 102    | CHUCK'S LAST ROAN           | G   | 15.2   | BAY ROAN      | 2006 | QH                      | LISA GABALDON/LISA GABALDON                         |
| 103    | PAINT MY TOWN RED           | M   | 16     | RED ROAN TOB. | 2007 | PAINT                   | DANA JONES/DARLA BRIDGES                            |
| 104    | JB'S ABSOLUT SOUTHERN PRIDE | G   | 15     | PALOMINO      | 2013 | MO. FOXTROTTER          | MARCIA CORBETT/MARCIA CORBETT                       |
| 105    | PROUD TRADITION             | G   | 14.3   | SORREL        | 2010 | MO. FOXTROTTER          | TORI BLANKENSHIP/MARCIA CORBET                      |
| 106    | SWEET STYLISH MARANA        | M   | 15.3   | RED ROAN      | 2015 | QUARTER HORSE           | ANDREA MARTIN/ANDREA MARTIN                         |
| 107    | APACHE                      | G   | 14.2   | WHT/BR/BLK    | 2004 | APPALOOSA               | HARLAND DODD/HARLAND DODD                           |
| 108    | MARSHMELLOW OGOOGLEBAR      | G   | 13.2   | CHESTNUT/WHT  | 2013 | POA                     | ROBERT HAYES/MARYELLEN DODD                         |
| 109    | MARSHMELLOW OGOOGLEBAR      | G   | 13.2   | CHESTNUT/WHT  | 2013 | POA                     | JORDAN CONNELLY/MARYELLEN DODD                      |
| 110    | MY FANCY SKIPPER            | M   | 15.1   | PALIMINO      | 2010 | PAINT                   | KRISTINE BUIST/PAULA WILD                           |
| 111    | LUCKILY A DIMENSION         | G   | 15.2   | SORREL        | 2004 | QH                      | PAULA WILD PAULA WILD                               |
| 112    | ALIAS HOLLYWOOD             | G   | 15.1   | GREY          | 2019 | APPALOOSA               | KATHARINA NOWOTNY-BOLES/<br>KATHARINA NOWOTNY-BOLES |
| 113    | SKIES THE LIMIT +/          | S   | 15.3   | BAY TOBIANO   | 2007 | HALF ARAB               | JESSIE BONNEAU/JESSIE BONNEAU                       |
| 114    | THE WICKED WOLF             | G   | 15.1   | CHESTNUT      | 2010 | TN WALKING HOR.         | TAMRA STEINBRECHER/<br>TAMRA STEINBRECHER           |
| 115    | CREAMY RAPPED NUGGET        | G   | 15     | PALIMINO      | 2007 | PAINT                   | DARBY SAVOCA/LYDA SAVOCA                            |
| 116    | SANS GOLDEN SON             | G   | 14.3   | PALOMINO      | 2013 | QH                      | ALISON MACDONALD/<br>COURTNEY MACDONALD             |
| 117    | OM EL PASHAHN               | G   | 16     | GREY          | 2011 | ARABIAN                 | RICHAL FLANNERY/CAMILLE FULLER                      |
| 118    | REESE'S GOLD PIECES         | G   | 16     | BAY           | 2002 | QH                      | BROOKE WATZ/BROOKE WATZ                             |
| 119    | GALLANT PRINCE VON G        | G   | 15.3   | BLACK         | 2010 | FRIESIAN                | PATTY COUCH/PATTY COUCH                             |
| 120    | NOAH B.E.H.                 | G   | 14.2   | CHESTNUT      | 2009 | HAFLINGER               | ANNIE HOUCHIN/ANNIE HOUCHIN                         |
| 121    | HUNTIN FOR O'HENRY          | G   | 15.2   | CHESTNUT      | 2004 | QH                      | WENDY JEFFRIES/WENDY JEFFRIES                       |
| 122    | GALLOD FFANTASTIC           | G   | 15.2   | CHESTNUT      | 2006 | WELSH COB               | JOANN WILLIAMS/JOANN WILLIAMS                       |
| 123    | CHICS RED MAN               | G   | 16     | SORREL        | 2007 | QH                      | NATASHA HOPPE/NATASHA HOPPE                         |
| 124    | WTR HERESTOYOURHONOR        | M   | 16     | SORREL        | 2011 | QH                      | LYNN PALM/ADELAIDE R. PICKETT                       |
| 126    | LUNA NUEVA                  | M   | 15     | GRAY          | 2007 | AZTECA                  | BRANDIE HAINING/BRANDIE HAINING                     |
| 127    | HEZ WORTH THE WAIT          | G   | 16.3   | SORREL        | 1999 | QH                      | LEAH MARSHALL/LEAH MARSHALL                         |
| 128    | SAMMIE THE RED ROCKER       | G   | 15.3   | CHESTNUT      | 2013 | FRIESIAN X              | JENNIFER BIANCHI/JENNIFER BIANCHI                   |
| 129    | BLACK BETTY                 | M   | 15.1   | BLACK         | 2016 | FRIESIAN X              | JENNIFER BIANCHI/JENNIFER BIANCHI                   |
| 130    | E. C. MAJORITY              | G   | 15.1   | BAY           | 2005 | HALF ARAB               | TARA DAY/TARA DAY                                   |
| 131    | MODERN MUSE                 | M   | 16.3   | CHESTNUT      | 2015 | QH                      | MELISSA CRUZAN/DONNA CRUZAN                         |
| 132    | ORION                       | G   | 0      | GREY          | 2011 | MUSTANG                 | VIVIAN MEVORAH/VIVIAN MEVORAH                       |
| 133    | HWF LIBERTY BELLE           | M   | 15.3   | BLACK         | 2012 | FRIESIAN X              | CASSANDRA BULLARD/<br>CASSANDRA BULLAR              |
| 134    | DON'T COUNT ME OUT          | M   | 14.1   | BLUE ROAN     | 2009 | AM. QTR PONY            | LAUREN FRINGO SMITH/LAUREN FRINGO SMITH             |
| 135    | EXTENDED OUTLOOK            | G   | 16.1   | CHESTNUT      | 2007 | QH                      | LAUREN FRINGO SMITH/LAUREN FRINGO SMITH             |
| 136    | HESATUFIMPRESSION           | G   | 14.3   | BLACK WHITE   | 1999 | PAINT                   | ALEXA MURPHREE/SUZANNE MURPHREE                     |
| 137    | RICOCHETT RICK              | G   | 14.2   | BAY           | 2008 | QH                      | SARAH SHEETS/KIMBERLY SHEETS                        |
| 138    | FORT KNOX                   | G   | 14     | PALO. PINTO   | 2009 | GYPSY VANNER            | LAURA SHEETS/ KIMBERLY SHEETS                       |
| 139    | SMARTY PEPTO                | G   | 15.1   | SORREL        | 2004 | QH                      | ELLIE STINE MASEK/ELLIE STINE MASEK                 |
| 140    | CROMED OUT PISTOL           | G   | 16.1   | BAY           | 2011 | QH                      | ELLIE STINE MASEK/ELLIE STINE MASEK                 |
| 141    | ANTE FINE DESIGN            | M   | 15.2   | SORRELL/WHITE | 2008 | PAINT                   | DANA SMITH/DANA SMITH                               |
| 142    | WTR HERESTOYOURHONOR        | M   | 16     | SORREL        | 2011 | QH                      | ADELAIDE R. PICKETT/ADELAIDE R. PICKETT             |
| 143    | THREE FATES CHEIRON         | G   | 14.3   | CHESTNUT      | 2005 | MORGAN                  | LORI SARGEANT/LORI SARGEANT                         |
| 144    | SHEZA HOT PISTOLA           | M   | 14.1   | BAY           | 2004 | QH                      | NANCE MCMANUS/NANCE MCMANUS                         |
| 145    | NEW YORK CITY SLICKER       | G   | 15     | SPOTTED BAY   | 2004 | MO. FOXTROTTER<br>CROSS | WALAND BURGER/WALAND BURGER                         |
| 146    | JJ'S SWEET DREAM            | M   | 15     | GLD CHAMP.    | 2005 | MO. FOXTROTTER          | LYNNE BURGER/LYNNE BURGER                           |
| 147    | VP KEYS TO MY KARMA         | M   | 15.2   | SORRELL       | 2005 | QH                      | TIM CHRISTENSEN/LINDA HENRY                         |
| 148    | DREAMING OF AN OSCAR        | S   | 15.1   | SILVER BAY    | 2016 | GYPSY VANNER            | TIM CHRISTENSEN/LINDA HENRY                         |
| 149    | SHARI GEMINI                | G   | 16.1   | CHESTNUT      | 2005 | ARAB X                  | MONIQUE CZAJA/MONIQUE CZAJA                         |



# THE 2019 WESTERN DRESSAGE WORLD CHAMPIONSHIP SHOW

| BACK # | HORSE                     | SEX | HEIGHT | COLOR        | YEAR | BREED           | RIDER/OWNER                                       |
|--------|---------------------------|-----|--------|--------------|------|-----------------|---|
| 150    | SHARI GEMINI              | G   | 16.1   | CHESTNUT     | 2005 | ARAB X          | TIM CHRISTENSEN/MONIQUE CZAJA                     |
| 151    | HEAVEN HELP US            | M   | 15.1   | SORREL       | 2009 | MO. FOXTROTTER  | DEBRA LEVILLIE/DEBRA LEVILLIE                     |
| 152    | CRIMSON SKY               | G   | 16.1   | CHESTNUT     | 2010 | QH X            | RENEE GERARD JOHNSON/DEBORAH MARTIN               |
| 153    | WOODY B INVITED           | G   | 16.2   | SORREL/WHITE | 2003 | PINTO           | MARJIE WENGER/MARJIE WENGER                       |
| 154    | POCOS SILVER SAGEBRUSH    | M   | 14.3   | GRULLA ROAN  | 2011 | QH X            | ANDREA MARTIN/ANDREA MARTIN                       |
| 155    | WSG MYSTIC EXPRESSION GCH | G   | 15.1   | BAY          | 2000 | MORGAN          | NICKI SMITH/NICKI SMITH                           |
| 156    | LIANNA NAF                | M   | 15.2   | BLACK        | 2011 | FRIESIAN        | ROBERT HAYES/UDITH ZIVKO                          |
| 157    | SNAZZY                    | G   | 15.1   | PALOMINO     | 2010 | PAINT           | RENEE GERARD JOHNSON/MARILU RAJALA                |
| 158    | CLIFFORD                  | G   | 15.3   | CHESTNUT     | 2004 | PAINT           | RENEE GERARD JOHNSON/MARILU RAJALA                |
| 159    | YB VERSION COWBOY         | G   | 15.2   | BAY          | 2008 | QH              | DONNA ANDERSON/DONNA ANDERSON                     |
| 160    | ASR FADLS WILLIE          | G   | 15.1   | BAY          | 2004 | ARABIAN         | MARILYN WEBER/MARILYN WEBER                       |
| 161    | R GENGA +++//             | G   | 15     | CHESTNUT     | 2014 | HALF ARAB       | MARILYN WEBER/MARILYN WEBER                       |
| 162    | FORTE WF                  | G   | 15     | GREY         | 2008 | ARABIAN         | MARILYN WEBER/MARILYN WEBER                       |
| 163    | SHENANIGANS TOO +++//     | G   | 16     | BAY          | 2007 | HALF ARAB       | MARILYN WEBER/MARILYN WEBER                       |
| 164    | SARGES CHOICEY BOY        | G   | 15     | BLACK WHITE  | 2002 | TN WALKING HOR. | JESSICA MARLEWSKI/JESSICA MARLEWSKI               |
| 165    | ROWDY SPIRIT              | G   | 15.1   | SORREL       | 2012 | TN WALKING HOR. | JESSICA MARLEWSKI/JESSICA MARLEWSKI               |
| 166    | JUBILEE BANJO             | G   | 16.1   | GRAY         | 1999 | ANDALUSIAN      | FRANCES CARBONNEL/<br>FRANCES CARBONNEL           |
| 167    | TECOLOTE                  | G   | 16.1   | BAY          | 2004 | ANDALUSIAN      | JANE ANN LAKE/JANE ANN LAKE                       |
| 168    | COLOR ME HEART            | M   | 15     | TOBIANO BAY  | 2011 | PAINT           | CRISTIN KYLE/CRISTIN KYL                          |
| 169    | TRR PEPCIDS SENORITA      | M   | 14.1   | SORREL       | 2008 | QH              | LAUREN MERCHANT/AMBER COOKE                       |
| 170    | TORO KING OF DASH         | G   | 15.1   | SORREL       | 2002 | QH              | PAETYN GILLIAM/PAETYN GILLIAM                     |
| 171    | PENDRAGON                 | G   | 17     | GREY         | 2012 | DRAFT CROSS     | ANNA DROEGEMUELLER/<br>ANNA DROEGEMUELLER         |
| 172    | J & J GOLDEN IMAGE        | G   | 15.2   | PALOMINO     | 2005 | MORGAN          | CATHY B BEEKMAN/CATHY B BEEKMAN                   |
| 173    | ROWDY                     | G   | 15     | SORREL       | 2010 | APPENDIX        | SHARI BROSS/SHARI BROSS                           |
| 174    | HEDWIG                    | M   | 14     | APPALOOSA    | 2004 | GRADE           | GABRIELLA BULLARD/GABRIELLA BULLARD               |
| 175    | WYKALINA                  | M   | 16.1   | BAY          | 2004 | AM. WARMBLOOD   | LISA MANN/LISA MANN                               |
| 176    | STAR DANCER               | M   | 15     | BAY          | 2000 | HALF ARAB       | LORI NEISES/LORI NEISES                           |
| 177    | DRESSED FOR PARADISE      | G   | 15.2   | CHEST/WHITE  | 2003 | APPALOOSA       | MICHAEL MARQUEZ/PEGGY CARNEY                      |
| 178    | DRESSED FOR PARADISE      | G   | 15.2   | CHEST/WHITE  | 2003 | APPALOOSA       | LAURA MARQUEZ/PEGGY CARNEY                        |
| 179    | MR. FRENCH SUGAR          | G   | 15.1   | DUNN         | 2007 | QH              | LAURA MARQUEZ/TRACY CORMIER                       |
| 180    | NEWMONT'S MOCHA MAN       | G   | 15     | BLACK        | 2015 | MORGAN          | MICHAEL MARQUEZ/LYNN FUDA                         |
| 181    | ANNIES CHROME BUMPER      | M   | 14.2   | SORREL       | 2003 | QH              | CHRISTINE STAEBLER/CHRISTINE STAEBLER             |
| 182    | BRAVADO                   | G   | 14     | BLACK        | 2009 | MUSTANG         | BETSY RENGIFO/BETSY RENGIF                        |
| 183    | PWR SMART ALEX            | M   | 15.1   | PAL. OVERO   | 2012 | PAINT/PINTO     | ANGELA STOKES/ANGELA STOKES                       |
| 184    | PWR BRIENNE OF TARTH      | M   | 15.3   | BLACK        | 2015 | FRIESIAN X      | PATTY COUCH/ANGELA STOKES                         |
| 185    | MEGAN                     | M   | 15     | BAY          | 2007 | AZTECA          | KELLY ADAMS/KELLY ADAMS                           |
| 186    | INVITE TO INVEST          | G   | 15.2   | BAY          | 2008 | QH              | JENNA BRUMM/HEILA PURDUM                          |
| 187    | HOTRODDER MIKE            | G   | 14.1   | BAY          | 1997 | QH              | KELLY ADAMS/KELLY ADAMS                           |
| 188    | RISKY ENDEAVOR            | G   | 14.3   | BLACK WHITE  | 2008 | PAINT           | MICHAEL T CARROLL/MICHAEL T CARROLL               |
| 189    | GUNNIN FOR ROMANCE        | G   | 15.2   | CHESTNUT     | 2014 | QH              | MELISSA HARMS GROSSMAN/<br>MELISSA HARMS GROSSMAN |
| 190    | COMPADRE'S DAKOTA RANGER  | G   | 14.2   | BAY          |      | MORGAN          | MARIE LLANES/STEVE DEITEMEYER                     |
| 191    | ZIPPIN WITH CHOCOLET      | G   | 0      | Unknown      | 0    | UNKNOWN         | TAYLOR HAMMANN/WENDY JEFFRIES                     |
| 192    | MEEKO SUAVE               | G   | 15     | PALOMINO     | 2000 | PAINT           | JACQUI BERTELSEN/JACQUI BERTELSEN                 |
| 193    | EQUINOX COURAGE UNDERFIRE | G   | 16     | PALOMONO     | 2004 | MORGAN          | JULIE HAUGEN/MINA COX                             |
| 194    | EQUINOX COURAGE UNDERFIRE | G   | 16     | PALOMONO     | 2004 | MORGAN          | KEHAN COX/MINA COX                                |
| 195    | WN LADY CECILE            | M   | 15     | BAY          | 2000 | ARABIAN         | LAUREN REEVES/WAYNE NEWTON                        |
| 196    | WN LADY CECILE            | M   | 15     | BAY          | 2000 | ARABIAN         | PAM BURNS/WAYNE NEWTON                            |
| 197    | TCR DUN IT AWESUM         | M   | 15.2   | PALOMINO     | 2010 | HALF ARAB       | LAUREN REEVES/SHERRY FOSTER                       |
| 198    | TCR DUN IT AWESUM         | M   | 15.2   | PALOMINO     | 2010 | HALF ARAB       | SHERRY FOSTER/SHERRY FOSTER                       |
| 199    | AM SITT MALIKA H          | M   | 14.2   | GREY         | 2008 | ARABIAN         | SHERRY FOSTER/SHERRY FOSTER                       |

# THE 2019 WESTERN DRESSAGE WORLD CHAMPIONSHIP SHOW

| BACK # | HORSE                    | SEX | HEIGHT | COLOR          | YEAR | BREED           | RIDER/OWNER   |
|--------|--------------------------|-----|--------|----------------|------|-----------------|---|
| 200    | AM SITT MALIKA H         | M   | 14.2   | GREY           | 2008 | ARABIAN         | DEDE BISCH/SHERRY FOSTER                            |
| 201    | MODEL CITIZEN            | M   | 14.2   | BAY            | 2011 | ARABIAN         | SARA SHERMAN GLASER/<br>SARA SHERMAN GLASER         |
| 202    | MODEL CITIZEN            | M   | 14.2   | BAY            | 2011 | ARABIAN         | DEDE BISCH/SARA SHERMAN GLASER                      |
| 203    | ALL AROUND MIDNIGHT      | S   | 15.2   | BLACK          | 2004 | TN WALKING HOR. | SCOT MACGREGOR/SCOT MACGREGOR                       |
| 204    | BANNERS DIXIE BELLE      | M   | 15     | BLACK          | 2003 | TN WALKING HOR. | SCOT MACGREGOR/MARILYNNE MACLEOD                    |
| 205    | EXTRA DARING             | G   | 15.3   | BAY            | 2013 | TN WALKING HOR. | SCOT MACGREGOR/PATRICIA CROUSE                      |
| 206    | JOSSES SMOKE SCREEN      | G   | 15.1   | GREY           | 2014 | TN WALKING HOR. | SCOT MACGREGOR/MARTHA CHILD                         |
| 207    | JOSSES ONE LINER         | S   | 15.3   | GREY           | 2015 | TN WALKING HOR. | SCOT MACGREGOR/DA MCGOVERN                          |
| 208    | DUSTY                    | G   | 16     | PALOMINO       | 2010 | GRADE           | WILEY GILLMOR/WILEY GILLMOR                         |
| 209    | WCS HOLIDAY FALON        | M   | 15.3   | BROWN          | 2009 | MORGAN          | SARA BREYMAN/SALLEY PLUMLEY                         |
| 210    | MY KINDA RIDE            | G   | 16.1   | BAY TOBIANO    | 2013 | PAINT           | CHARLINDA SCHABINGER/<br>CHARLINDA SCHABINGER       |
| 211    | MAJORS WINNIN CHEX       | G   | 14.2   | PALOMINO       | 2016 | QH              | SOPHIA HARRIS/CONNIE KLAUZER                        |
| 212    | HS PINERO                | G   | 15     | BAY            | 2010 | ARABIAN         | JENNIFER SIGETY/JENNIFER SIGETY                     |
| 213    | FAITH                    | M   | 16.2   | BAY            | 2005 | OLDENBURG/NA    | ROBERT HAYES/LEIGH LAFFERTY                         |
| 214    | HARTLAND HEART OF GOLD   | M   | 15.3   | CHESTNUT       | 2008 | MORGAN          | CAROLYN WOOD/CAROLYN WOOD                           |
| 215    | FRECKLED TAFFY           | M   | 14.3   | SORREL         | 2002 | QH              | SOPHIA HARRIS/SOPHIA HARRIS                         |
| 216    | MWS GOLDON MY ZIPPER     | M   | 15.2   | PALOMINO       | 2008 | QH              | LIZ SNOBLEN/LIZ SNOBLEN                             |
| 217    | ZIPS COWBOY POET         | G   | 16     | SORREL         | 2007 | QH              | PAMELA PIERCE/PAMELA PIERCE                         |
| 218    | BEANS PEPTO GUN          | M   | 15     | BAY            | 2010 | QH              | TRISHA SWIFT/TRISHA SWIFT                           |
| 219    | MR. T A CHARISMA         | G   | 16.1   | SORREL         | 2001 | PAINT           | MAUREEN KINYON/MAUREEN KINYON                       |
| 220    | SUDDEN CHIPPED           | G   | 15.3   | SORREL         | 2007 | PAINT           | REBECCA DENNIS/NICKKI DOMBROCK                      |
| 221    | JDS SUNDAY DRIVE         | G   | 15.2   | BAY            | 2000 | QH              | REBECCA DENNIS/REBECCA DENNIS                       |
| 222    | RR LONSUM TEXAS          | M   | 15.2   | BAY            | 2006 | QH              | KAREN BURGER/KAREN BURGER                           |
| 223    | DARK CHOCOLIT            | G   | 16     | BLACK          | 2007 | QH              | KRISTA NOBILO/KRISTA NOBILO                         |
| 224    | SPLIT MT MELODY          | M   | 14.3   | BLACK          | 2001 | MORGAN          | SARAH PRUETZ/GLAMOUR MORGANS                        |
| 225    | LONE STAR BILL GCH       | G   | 15.2   | BAY            | 2000 | MORGAN          | SARAH PRUETZ/10 STAR RANCH                          |
| 226    | BELLA CAPRICIO           | M   | 16     | BLACK          | 2001 | QH              | LISA MINTER/LISA MINTER                             |
| 227    | BODIE                    | G   | 15.1   | SORREL         | 2006 | GRADE           | JENNA BRUMM/CRYSTAL DWYER                           |
| 228    | HOLLOWAY'S MISTY         | M   | 14.1   | BROWN DUN      | 2001 | FJORD           | SILJA KNOLL/SILJA KNOLL                             |
| 229    | BARONS DYNAMITE          | M   | 15     | SORREL         | 2006 | QH              | DANA PANTANO/DANA PANTANO                           |
| 230    | STELLA JAMES             | M   | 15.3   | BAY/WHT TOVERO | 2015 | PAINT           | CALISTA BOYER/DEBRA BOSTON                          |
| 231    | STELLA JAMES             | M   | 15.3   | BAY/WHT TOVERO | 2015 | PAINT           | DEBRA BOSTON/DEBRA BOSTON                           |
| 232    | STRAWERRY                | M   | 15     | RED ROAN       | 1999 | QH              | ASHLEY GILBERT/ASHLEY GILBERT                       |
| 233    | HAY MOMMA ROCK ME        | M   | 16.1   | SORREL         | 2013 | QH              | GLYNIS WALFORD/RONNIE D SHELBY                      |
| 234    | BONITA LIGHTS            | M   | 14     | SORREL         | 2008 | QH              | GLYNIS WALFORD/GLYNIS WALFORD                       |
| 235    | NINA                     | M   | 15.2   | BUCKSKIN       | 2008 | QH              | EMMA SMITH/EMMA SMITH                               |
| 236    | DOLLY DUMAS              | M   | 16     | BLACK          | 2002 | TN WALKING HOR. | ADA KEEN/ADA KEEN                                   |
| 237    | IMA PRAIRIE ROSE DS +++/ | M   | 15     | CHESTNUT       | 2001 | HALF ARAB       | SARAH JANE PRYOR/SARAH JANE PRYOR                   |
| 238    | IMA PRAIRIE ROSE DS +++/ | M   | 15     | CHESTNUT       | 2001 | HALF ARAB       | DEANA PRYOR/SARAH JANE PRYOR                        |
| 239    | DANTE                    | G   | 14.2   | BAY            | 2001 | AM. SPORT PONY  | EMILY DENNY/MICHELLE BINDER ZOLEZZI                 |
| 240    | PADDY'S IRISH STARLET    | M   | 15     | CHESTNUT       | 2001 | QH              | KORBIN ECKERT/<br>MICHELLE BINDER ZOLEZZI           |
| 241    | FT INSPIRED BY GOLD      | G   | 15.3   | CHESTNUT       | 1996 | AM. WARMBLOOD   | KORBIN ECKERT/<br>MICHELLE BINDER ZOLEZZI           |
| 242    | BINGSE                   | M   | 14     | DUN            | 1900 | FJORD           | MARY HARTMEIER/<br>MICHELLE BINDER ZOLEZZI          |
| 243    | FT INSPIRED BY GOLD      | G   | 15.3   | CHESTNUT       | 1996 | AM. WARMBLOOD   | MICHELLE BINDER ZOLEZZI/<br>MICHELLE BINDER ZOLEZZI |
| 244    | SPINDOLL                 | M   | 14     | BAY            | 1991 | QH              | SOPHIE FIELD/MICHELLE BINDER ZOLEZZI                |
| 245    | BINGSE                   | M   | 14     | DUN            | 1900 | FJORD           | CATHERINE FIELD/<br>MICHELLE BINDER ZOLEZZI         |
| 246    | SPINDOLL                 | M   | 14     | BAY            | 1991 | QH              | CARILYNN G WHITE/<br>MICHELLE BINDER ZOLEZZI        |
| 247    | DANTE                    | G   | 14.2   | BAY            | 2001 | AM. SPORT PONY  | MAYA HIBBELN/MICHELLE BINDER ZOLEZZI                |



# THE 2019 WESTERN DRESSAGE WORLD CHAMPIONSHIP SHOW

| BACK # | HORSE                    | SEX | HEIGHT | COLOR          | YEAR | BREED           | RIDER/OWNER                                 |
|--------|--------------------------|-----|--------|----------------|------|-----------------|---|
| 248    | EL MAGNUS HUNTER         | G   | 15.2   | DARK BAY       | 2002 | ANDALUSIAN      | PHYLLIS RAY/PHYLLIS RAY                     |
| 249    | DYNAMIC JAY              | G   | 15.2   | BAY            | 2010 | QH              | AVERY ALBERS/CRYSTAL WELSH                  |
| 250    | DYNAMIC JAY              | G   | 15.2   | BAY            | 2010 | QH              | CRYSTAL WELSH/CRYSTAL WELSH                 |
| 251    | PRECIOUS DESERT ROSE     | M   | 14.2   | CHESTNUT       | 2000 | MORAB           | MACKENZIE NELSON/DIANNE DOLL                |
| 252    | PRECIOUS DESERT ROSE     | M   | 14.2   | CHESTNUT       | 2000 | MORAB           | AUBREY ALBERS/DIANNE DOLL                   |
| 253    | TKR MAGICAL FLAME        | G   | 15     | CHESTNUT       | 2001 | ARABIAN         | AUBREY ALBERS/KATHRYN L FENWICH             |
| 254    | QAR LEAVINONAJETPLANE    | G   | 15.2   | RED ROAN       | 2000 | APPALOOSA       | DELANEY TOENSING/CRYSTAL WELSH              |
| 255    | VAREKAI CR               | M   | 14.2   | BLK TOBIANO    | 2010 | GYPSY           | LILLY TRAVIS/MARSHA GULICK                  |
| 256    | CENTURYS GOLD SUNDAY     | G   | 16     | PALOMINO       | 2000 | PAINT           | KATE MESCHES/KATE MESCHES                   |
| 257    | WILL CODY CHEX           | G   | 15     | BAY            | 2005 | QH              | DENISE MONTROSE/DENISE MONTROSE             |
| 258    | LONSUM SADIE             | M   | 15     | BUCKSKIN       | 2004 | QH              | KRISTEN WHITTAKER/KRISTEN WHITTAKER         |
| 259    | LONSUM SADIE             | M   | 15     | BUCKSKIN       | 2004 | QH              | RILEY WHITTAKER/KRISTEN WHITTAKER           |
| 260    | SWEET BLUE HONEY DEW     | M   | 15.1   | GRULLA         | 2012 | QH              | KRISTEN WHITTAKER/KRISTEN WHITTAKER         |
| 261    | SWEET BLUE HONEY DEW     | M   | 15.1   | GRULLA         | 2012 | QH              | HALEY WHITTAKER/KRISTEN WHITTAKER           |
| 262    | PEPPERS TEMPTRESS        | M   | 15     | DUN            | 2003 | QH              | HALEY WHITTAKER/KRISTEN WHITTAKER           |
| 263    | CASPIAN                  | G   | 15     | BAY            | 2010 | QH X            | LORNA COGAN/LORNA COGA                      |
| 264    | KENO RIO                 | G   | 15.2   | CHESTNUT       | 2009 | PAINT           | KRISONDRA MCMELLIAN/<br>KRISONDRA MCMELLIAN |
| 265    | MISSION MAGNUM           | G   | 15     | BAY            | 2001 | QH              | BROOKE WATZ/ DENISE WATZ                    |
| 266    | MR PAINTED MIDAS         | G   | 15.3   | PALO. PAINT    | 2006 | PAINT           | ALISON MACDONALD/<br>ALISON MACDONALD       |
| 267    | RAVENCLAW                | M   | 15     | BAY            | 2015 | QH              | STACY WESTFALL/STACY WESTFALL               |
| 268    | I CAN CAN I              | M   | 14     | DUN            | 2011 | QH              | STACY WESTFALL/STACY WESTFALL               |
| 269    | CSWQ PAY THE PIPER       | M   | 14.3   | BUCKSKIN       | 2012 | RESCUE          | CHRISTINA SCOTT/CHRISTINA SCOTT             |
| 270    | DOCS JOSE UNA            | M   | 15     | CHESTNUT       | 2012 | QH              | CHRISTINA SCOTT/CHRISTINA SCOTT             |
| 271    | GOODIE TWO SHOES         | M   | 15     | BAY            | 2009 | RESCUE          | ROBERT HAYES/ROBERT HAYES                   |
| 272    | MISS SUNNY VALENTINE     | M   | 15.1   | BUCKSKIN       | 2013 | QH              | LEAH NORSTRUD/LEAH NORSTRUD                 |
| 273    | SONNET PRECIOUS          | M   | 15     | BAY            | 2007 | QH              | DORIS MACDONALD/DORIS MACDONALD             |
| 274    | LR AMI TIGER WOULD       | G   | 15     | LIVER CHESTNUT | 2001 | MORGAN          | LYNNE SUCHY/LYNNE SUCHY                     |
| 275    | WILS ARCADE              | G   | 12.3   | GREY           | 2013 | POA             | LINDA ROADCAP/LINDA ROADCAP                 |
| 276    | TRULY BLESSED            | G   | 16.1   | CHESNUT        | 2002 | KWPN            | KIMBERLY BRUNSON/KIMBERLY BRUNSON           |
| 277    | ROSCOMMON MONDAY MORNING | M   | 15.1   | GRAY           | 2002 | CONNEMARA       | MARILEE TUSSING/MARILEE TUSSING             |
| 278    | ABED-NEGO CRHF           | G   | 15.3   | CHESTNUT       | 2006 | HAFLINGER       | GRACEANNE WINEGARD/<br>SUZANNE MORISSE      |
| 279    | MONIQUE                  | M   | 14.2   | BAY            | 1991 | ARABIAN         | ALYSSA LONGORIA/ALYSSA LONGORIA             |
| 280    | SABREENA SUE CRHF        | M   | 14.2   | CHESTNUT       | 2005 | HAFLINGER       | SUZANNE MORISSE/SUZANNE MORISSE             |
| 281    | MISS WILD WEST           | M   | 15     | LIVER CHESTNUT | 2002 | QH              | MARY LOU KULTGEN/KARI NICHOLS               |
| 282    | CLASSIC ROYAL PRIDE      | G   | 15.2   | BLACK          | 2006 | TN WALKING HOR. | ELIZABETH PLANT/ELIZABETH PLANT             |
| 283    | CLASSIC ROYAL PRIDE      | G   | 15.2   | BLACK          | 2006 | TN WALKING HOR. | JULIE HAUGEN/ELIZABETH PLANT                |
| 284    | UNO QUIXOTE HIX          | G   | 15.1   | SORREL         | 2006 | QH              | LYNN AHERN/LYNN AHERN                       |
| 285    | GIDEON                   | G   | 16.3   | BAY            | 2012 | DUTCH           | HOLLY FISHER/HOLLY FISHER                   |
| 286    | JUDGE PINE TIVIO         | G   | 15.2   | BUCKSKIN       | 2002 | QH              | HOLLY FISHER/HOLLY FISHER                   |
| 287    | MEIN LIEBLING            | G   | 14.2   | PALOMINO       | 2010 | AM. WARBLOOD    | EMMA KANE/EMMA KANE                         |
| 288    | LARKS BEST BETT          | M   | 16.1   | BAY            | 2003 | QH              | JULIE CAIN/JULIE CAIN                       |
| 289    | HAPPYHOURSAT3            | G   | 17.2   | GREY/GRULLO    | 2009 | QH              | JAY CAIN/JAY CAIN                           |
| 290    | LITTLE RED HOT           | M   | 14.2   | CHESTNUT       | 2011 | MUSTANG         | JIMMY WELCH/ JIMMY WELCH                    |
| 291    | LITTLE RED HOT           | M   | 14.2   | CHESTNUT       | 2011 | MUSTANG         | PATRICIA GRUBER/PATRICIA GRUBER             |
| 292    | SYNERGYS MOON DANCER     | M   | 15     | CHESTNUT       | 2007 | NATL SHOW HORSE | SARAH CROUSE/MELVA THOMAS                   |
| 293    | VICTORY'S THE CAT'S MEOW | S   | 16     | BAY            | 2006 | MORGAN          | JOYCE SWANSON/CLIFF SWANSON                 |
| 294    | OWH PEARL HARBOR         | G   | 14.2   | PINTO          | 2014 | MUSTANG         | PATRICIA GRUBER/PATRICIA GRUBER             |
| 295    | STYLISH RADIANCE         | G   | 15.1   | SORREL         | 2014 | QH              | GRACE NOELKE/STACEY MCALEXANDER             |
| 296    | IMPRESSED BY SURPRISE    | M   | 14     | BAY            | 2008 | QH              | CAYLA BETHEA/CAYLA BETHEA                   |
| 297    | SWANS DIAMOND BELLE      | M   | 15.2   | CHESTNUT       | 2012 | MORGAN          | JOYCE SWANSON/CLIFF SWANSON                 |
| 298    | EV CONQUISTADOR          | G   | 14.3   | BAY            | 1996 | MORGAN          | EVAN SAUNDERS/EVAN SAUNDERS                 |
| 299    | SHAMAN SPIRIT            | G   | 16.2   | BAY TOBIANO    | 2006 | PINTO           | JESSICA BAHNY/JANNA BAHNY                   |
| 300    | SOLID STERLING SILVER    | G   | 16.1   | BLACK OVERO    | 2016 | PINTO           | JESSICA BAHNY/FOX EYE RANCH                 |

# THE 2019 WESTERN DRESSAGE WORLD CHAMPIONSHIP SHOW

| BACK # | HORSE                    | SEX | HEIGHT | COLOR        | YEAR | BREED         | RIDER/OWNER                             |
|--------|--------------------------|-----|--------|--------------|------|---------------|---|
| 308    | LW CHAMPINE ICE          | G   | 15.2   | PALOMINO     | 2009 | QH            | KATHLEEN ELLIOTT/KATHLEEN ELLIOTT       |
| 309    | SIMON SAYS IM SOLO       | M   | 14.2   | PALOMINO     | 2005 | QH            | KATHY LEWIS/KATHY LEWIS                 |
| 310    | LYKA                     | M   | 15.2   | BAY          | 2008 | OLDENBURG/ISR | LAURIE HEDLUND/LAURIE HEDLUND           |
| 311    | KBS TIMEPIECE            | S   | 14.2   | Unknown      | 2004 | PAINT         | CINDY RAU-SOBOTKA/CINDY RAU-SOBOTKA     |
| 312    | A TRU PEPPY TIMEPIECE    | G   | 15     | BAY WHITE    | 2011 | PAINT         | SARAH FILZEN/CINDY RAU-SOBOTKA          |
| 313    | RUGGED PAINTED LARK      | G   | 15.1   | BAY TOBIANO  | 1997 | PAINT/PINTO   | LYNN PALM/LYNN PALM                     |
| 314    | MR. FRENCH SUGAR         | G   | 15.1   | DUNN         | 2007 | QH            | MICHAEL MARQUEZ/TRACY CORMIER           |
| 315    | FAMES COLORFULMIRACLE    | M   | 15.2   | BAY TOBIANO  | 2007 | HALF ARAB     | SANDRA LINDENBERG/<br>LINDA STOUDEMAYER |
| 316    | CHECKERS                 | G   | 16     | BAY          | 1997 | DANISH        | KYRIANA BEARD/NANCY BURBA               |
| 317    | ANTARES LIV              | G   | 15.2   | GREY         | 2010 | ANDALUSIAN    | NANCY ALLEN/CHARLI STEVENS              |
| 318    | BOO BERRY CRUNCH         | G   | 16.2   | DARK BAY     | 2001 | QH            | REBECCA NOWAK/REBECCA NOWAK             |
| 319    | JETHRO                   | G   | 16     | BUCKSKIN     | 2001 | QH            | LISA MANLOVE/LISA MANLOVE               |
| 320    | IVE BEEN SPLASHED        | M   | 14.2   | CHESNUT TOB. | 1996 | HALF ARAB     | MARY SKITTINO/MARY SKITTINO             |
| 321    | BA VYAAGRA BEY ++++//    | S   | 15.3   | BLACK        | 2001 | ARABIAN       | MARY SKITTINO/MARY SKITTINO             |
| 322    | MILE HI JOLIE            | M   | 15     | BUCKSKIN     | 2005 | MORGAN        | DEBORAH ELLIOTT/DEBORAH ELLIOTT         |
| 324    | BAKERS POCO SHILO        | M   | 14.3   | RED DUNN     | 2011 | AM. WARMBLOOD | TYLER W BREWSTER/DEBBI BAKER            |
| 325    | U.S. RELIANCE            | G   | 15.2   | BAY          | 2009 | AM. WARMBLOOD | TYLER W BREWSTER/SHARON BOOTH           |
| 326    | U.S. THUNDER             | G   | 15.2   | BAY          | 2001 | AM. WARMBLOOD | DAVID SMITH/SHARON BOOTH                |
| 327    | U.S. THUNDER             | G   | 15.2   | BAY          | 2001 | AM. WARMBLOOD | SHARON BOOTH/SHARON BOOTH               |
| 328    | U.S. MAJESTIC            | G   | 16.1   | CHESTNUT     | 2001 | AM. WARMBLOOD | DAVID SMITH/SHARON BOOTH                |
| 329    | U.S. MAJESTIC            | G   | 16.1   | CHESTNUT     | 2001 | AM. WARMBLOOD | SHARON BOOTH/SHARON BOOTH               |
| 330    | DESCENT                  | G   | 14.3   | BAY          | 2007 | MUSTANG       | JENNIFER HUSTIS/JENNIFER HUSTIS         |
| 331    | SIMONE DEVILLE           | M   | 14.3   | SORREL       | 2010 | QH            | STACEY MCALEXANDER/SHELLEY GRAHAM       |
| 332    | SCOTTY'S INVITATION      | G   | 16     | BAY          | 2007 | QH            | LARA STOODLEY/LARA STOODLEY             |
| 333    | TABIHAS PERSCRIPTION     | M   | 15.1   | CHESTNUT     | 2007 | QH            | KATIE MCCALL/KATIE MCCALL               |
| 334    | GW LEES LAST ENCORE      | G   | 15     | PALOMINO     | 2011 | HALF ARAB     | KARLEY MCCALL/KARLEY MCCALL             |
| 335    | LARCOS BOY               | G   | 15.3   | BAY          | 2008 | UNKNOWN       | SUSAN MACHIN/SUSAN MACHIN               |
| 336    | RQT TRADITIONS BY DESIGN | M   | 13.3   | SORREL WHITE | 2004 | POA           | MARGARET KITTS/MARGARET KITTS           |
| 337    | ECHO ZULU                | G   | 16.3   | BAY          | 2010 | QH            | MARGARET KITTS/SUSAN L JOHNSON          |
| 338    | BRAT                     | G   | 15     | SORREL WHITE | 2000 | PAINT         | SOREN REED SOREN REED                   |
| 339    | GEORGE CLOONEY           | G   | 16.5.1 | BAY ROAN     | 2000 | QH            | MARGARET KITTS/MEAGAN WOODS             |
| 340    | MADHEENS RESSURECTION    | M   | 14.3   | GREY         | 2015 | ARABIAN       | ANNIE WIGGINS/REGINIA GODFREY           |
| 341    | MADHEENS RESSURECTION    | M   | 14.3   | GREY         | 2015 | ARABIAN       | REGINIA GODFREY/REGINIA GODFREY         |
| 342    | DOCS SILVERFISTFUL       | M   | 15     | GREY         | 2006 | QH            | DAN MARCUM/PATRECE RAMEY                |
| 343    | MAKINTYME                | G   | 15.1   | BAY          | 1999 | ARABIAN       | KATHY MARCUM/KATHY MARCUM               |
| 344    | DOUBLE DOSA ESPRESSO     | M   | 15     | BAY          | 2013 | ARAB X        | ANNIE WIGGINS/TAMMY SIMON               |
| 345    | MISSION MAGNUM           | G   | 15     | BAY          | 2001 | QH            | ROXANNA RUIZ-LEE/ROXANNA RUIZ-LEE       |
| 346    | CON AIR                  | M   | 16.1   | GREY         | 2006 | OLDENBURG/GOV | KAYLA KUEBLER/KAYLA KUEBLER             |
| 347    | APOLLO THIRTEEN          | G   | 14.3   | BAY          | 2009 | QH            | CHRISTEN SINKARSIN/CHRISTEN SINKARSIN   |





Another 1st from Don Stine Communications & Photography

***OUR NEW  
#1  
SELLER!***

***"WANT IT NOW!"***



**IMMEDIATE DOWNLOAD IN 5 MINUTES!**

***Hi and Lo Resolution Digital Downloads  
of Your Photos to Your Laptop, iPad,  
Smartphone or Computer  
in 5 minutes or less!***

***You will receive an email after checkout with a link to download your images!***

***(WYSIWYG...sorry...retouching is not available for this special)***

***PLUS... YOU WILL SAVE AN ADDITIONAL  
10 % OFF!***

***on all orders placed during the show taken automatically at checkout!***

***Stine***

***www.donstine.com • 832-289-2250***



THE MOTHER ROAD LEADS TO

# EDMOND



## WELCOME 2019 Western Dressage World Championship Show



While you are here, check out all there is to see and do around Edmond at our website, [VisitEdmondOK.com](http://VisitEdmondOK.com)

Edmond Convention & Visitors Bureau  
(405) 341-4344 or (866) 341-4344

